

# Economic indicators for Belgium



WEEKLY PUBLICATION

N° 2021-37 2021-09-17

## Summary

	ACTUAL FIGURES*			FORECASTS**									
	2018	2019	2020	2021					2022				
				NBB	ECB	EC	OECD	BPN***	NBB	ECB	EC	OECD	BPN***
REAL GDP				<i>(percentage changes compared to the previous year)</i>									
Belgium													
Final consumption													
private	1.9	1.5	-8.7	3.8	-	4.6	4.3	-	7.2	-	6.3	5.7	-
public	1.3	1.6	0.6	3.7	-	4.1	5.0	-	-0.1	-	0.4	0.6	-
Gross fixed capital formation	3.4	3.5	-6.9	10.9	-	6.0	7.5	-	2.1	-	2.8	4.4	-
Exports of goods and services	0.6	1.0	-4.6	6.8	-	5.9	7.0	-	4.8	-	3.9	4.8	-
Imports of goods and services	1.3	0.8	-4.3	5.6	-	6.1	7.7	-	5.7	-	4.3	5.4	-
GDP	1.8	1.8	-6.3	5.5	-	4.5	4.7	5.1	3.3	-	3.7	3.5	3.5
International comparison of GDP													
Euro area <sup>(1)</sup>	1.9	1.3	-6.5	-	5.0	4.3	4.3	4.5	-	4.6	4.4	4.4	4.4
EU-27	2.1	1.6	-6.1	-	-	4.2	-	-	-	-	4.4	-	-
CONSUMER PRICES													
Belgium				<i>(percentage changes compared to the previous year)</i>									
HICP	2.3	1.2	0.4	2.2	-	1.8	1.5	1.8	2.1	-	1.5	1.2	1.6
National general index	2.1	1.4	0.7	1.5	-	-	-	-	2.0	-	-	-	-
National health index	1.8	1.5	1.0	1.2	-	-	-	-	2.0	-	-	-	-
International comparison of HICP													
Euro area <sup>(3)</sup>	1.8	1.2	0.3	-	2.2	1.7	1.8	1.9	-	1.7	1.3	1.3	1.3
EU-27	1.8	1.4	0.7	-	-	1.9	-	-	-	-	1.5	-	-
LABOUR COSTS IN THE PRIVATE SECTOR <sup>(2)</sup>													
Belgium				<i>(percentage changes compared to the previous year)</i>									
Labour costs per hour worked	1.5	2.3	4.2	0.4	-	-	-	-	1.8	-	-	-	-
Unit labour costs	1.2	1.7	4.0	-1.2	-	-2.3	-	-	0.8	-	0.5	-	-
Unit labour costs													
Euro area <sup>(1)</sup>	1.9	1.9	4.4	-	-1.0	-0.7	-	-	-	-0.4	-0.6	-	-
EU-27	2.2	2.1	4.7	-	-	-0.7	-	-	-	-	-0.5	-	-

\* Sources: Belgium (NAI, NBB, Statbel, EC); Euro area, EU-27 (ECB, Eurostat).

\*\* The 2021 and 2022 forecasts from the NBB are consistent with the estimates from June 2021 in the Economic Revue (next update - Economic Revue December 2021). Users should be aware that estimates of this kind can sometimes be out of date owing to changes in the information available. The older the estimates, the greater this risk becomes. Publication of the estimate therefore simply means that it is the latest estimate released by the NBB.

ECB staff macroeconomic projections September 2021 (next issue December 2021);

OECD Economic Outlook May 2021 (next release November 2021).

EC European Economic Forecast Spring 2021 (next release Autumn 2021) and BPN June 2021 (next release September 2021).

\*\*\* Average of the credit institutions which participate in the «Belgian Prime News».

(1) Euro area = EA19, except the OECD forecasts.

(2) Except for the actual figures of the Euro area and the EU-27 and the EC and OECD forecasts which pertain to the whole economy.

(3) Euro area = EA11-2000, EA12-2006, EA13-2007, EA15-2008, EA16-2010, EA17-2013, EA18-2014, EA19.

## Summary (continued)

	ACTUAL FIGURES*			FORECASTS**									
	2018	2019	2020	2021					2022				
				NBB	ECB	EC	OECD	BPN***	NBB	ECB	EC	OECD	BPN***
<b>LABOUR MARKET</b>													
<i>(annual changes in percentages)</i>													
Belgium													
Total employment	1.5	1.6	0.0	0.6	-	-0.6	-0.5	0.3	0.2	-	0.8	0.6	0.9
Unemployment	-5.8	-3.8	3.7	-1.2	-	-	-	-	0.6	-	-	-	-
<i>(annual changes in thousands)</i>													
Total employment	70.7	76.8	-0.4	31.6	-	-	-23.0	-	8.4	-	-	29.7	-
Unemployment	-30.4	-18.8	17.5	-5.8	-	-	-	-	2.9	-	-	-	-
<i>(annual averages in percentages of labour force)</i>													
Harmonised unemployment rate <sup>(1)</sup>	6.0	5.4	5.6	5.8	-	6.7	6.4	6.0	6.0	-	6.5	6.3	6.0
International comparison of harmonised unemployment rate <sup>(1)</sup>													
Euro area <sup>(2)</sup>	8.1	7.5	7.8	-	7.9	8.4	8.2	8.4	-	7.7	7.8	7.9	8.3
EU-27	7.2	6.7	7.1	-	-	7.6	-	-	-	-	7.0	-	-
<b>GENERAL GOVERNMENT</b>													
<i>(percentages of GDP)</i>													
Belgium													
Primary balance	1.3	0.1	-7.4	-5.2	-	-5.9	-	-	-2.6	-	-3.5	-	-
Overall balance	-0.8	-1.9	-9.4	-6.8	-	-7.6	-7.2	-6.9	-4.0	-	-4.9	-4.0	-4.8
Consolidated gross debt	99.8	98.1	114.1	112.8	-	115.3	115.3	114.3	112.1	-	115.5	115.0	114.1
International comparison of overall balance													
Euro area <sup>(2)</sup>	-0.5	-0.6	-7.2	-	-7.1	-8.0	-7.2	-7.3	-	-3.0	-3.8	-3.7	-4.1
EU-27	-0.4	-0.5	-6.9	-	-	-7.5	-	-	-	-	-3.7	-	-
<b>CURRENT ACCOUNT</b>													
<i>(percentages of GDP)</i>													
Belgium													
	-0.8	0.3	-0.2	-0.3	-	-0.1	-0.9	0.4	-0.5	-	-0.5	-1.4	-0.1
International comparison													
Euro area <sup>(2)</sup>	3.0	2.4	2.2	-	1.8	3.1	3.3	2.6	-	1.3	3.1	3.2	2.5
EU-27	2.9	2.7	2.7	-	-	3.1	-	-	-	-	3.1	-	-

\* Sources: Belgium (NAI, NBB, Statbel, EC); Euro area, EU-27 (ECB, Eurostat).

\*\* The 2021 and 2022 forecasts from the NBB are consistent with the estimates from June 2021 in the Economic Revue (next update - Economic Revue December 2021). Users should be aware that estimates of this kind can sometimes be out of date owing to changes in the information available. The older the estimates, the greater this risk becomes. Publication of the estimate therefore simply means that it is the latest estimate released by the NBB.  
ECB staff macroeconomic projections September 2021 (next issue December 2021);  
OECD Economic Outlook May 2021 (next release November 2021);  
EC European Economic Forecast Spring 2021 (next release Autumn 2021) and BPN June 2021 (next release September 2021).

\*\*\* Average of the credit institutions which participate in the «Belgian Prime News».

(1) This series corresponds with the results of the Labour Force Survey (LFS, Population older than 15 years), monthly adjusted by using the administrative national unemployment figures, in accordance with the Eurostat's methodology.

(2) Euro area = EA19, except the OECD forecasts.

GDP <sup>(1)</sup>	2019			2020				2021	
	II	III	IV	I	II	III	IV	I	II
<i>(millions of euro)</i>									
Belgium									
GDP in chained 2015 euros	110718	111273	111926	108180	95271	106491	106420	107605	109446
<i>(percentage changes)</i>									
vs the previous quarter	0.3	0.5	0.6	-3.3	-11.9	11.8	-0.1	1.1	1.7
vs the corresponding quarter of the previous year	1.7	1.9	1.6	-2.0	-14.0	-4.3	-4.9	-0.5	14.9
<i>(percentage changes)</i>									
International comparison									
vs the previous quarter									
Euro area <sup>(2)</sup>	0.2	0.3	0.0	-3.5	-11.7	12.6	-0.4	-0.3	2.2
EU-27	0.2	0.3	0.0	-3.1	-11.3	11.8	-0.2	-0.1	2.1
vs the corresponding quarter of the previous year									
Euro area <sup>(2)</sup>	1.5	1.7	1.1	-3.0	-14.5	-4.0	-4.4	-1.2	14.3
EU-27	1.7	1.9	1.4	-2.5	-13.7	-3.9	-4.1	-1.2	13.8

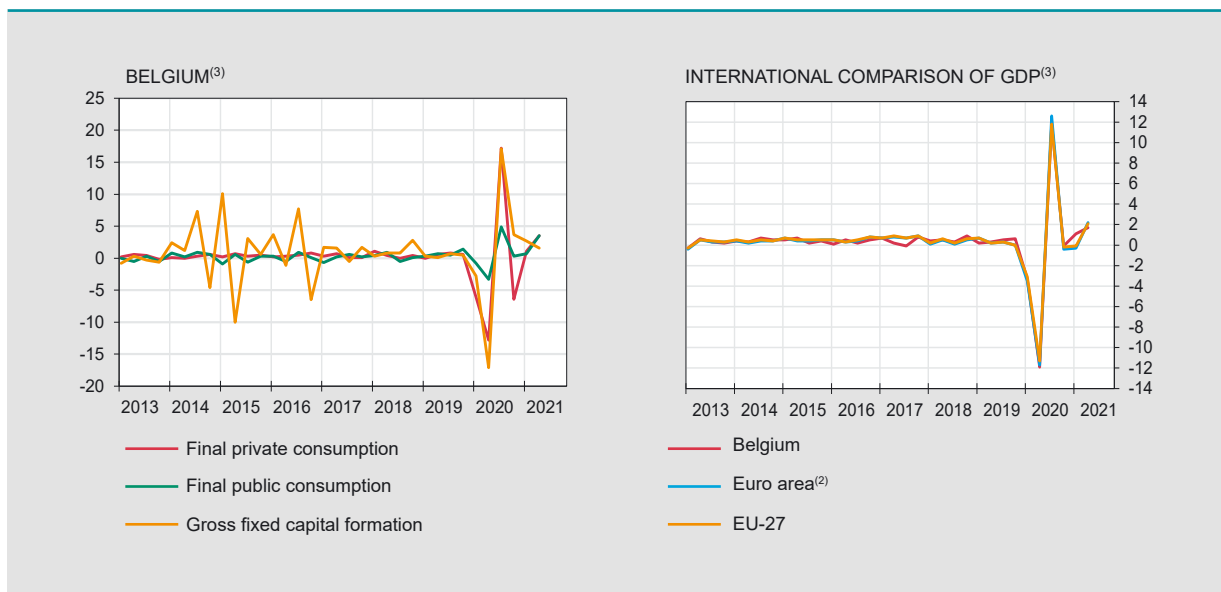
MAIN COMPONENTS OF EXPENDITURE<sup>(1)</sup>

*(percentage changes compared to the corresponding quarter of the previous year)*

Final private consumption	1.0	1.8	2.1	-4.2	-17.0	-3.5	-10.3	-3.4	14.8
Final public consumption	0.7	1.7	3.0	1.8	-2.2	2.1	1.0	2.5	9.7
Gross fixed capital formation	4.0	3.9	1.5	-1.7	-18.6	-5.3	-2.2	3.4	26.8
business	3.3	3.5	2.5	-0.8	-21.7	-5.8	-3.0	2.8	31.3
housing	8.6	3.7	1.3	-4.9	-18.9	-2.3	-1.2	6.7	24.9
public	0.0	6.5	-3.9	-0.6	1.8	-7.7	1.4	1.2	8.2
Exports of goods and services	1.4	1.3	1.4	0.3	-12.9	-4.2	-1.8	-1.1	17.0
Imports of goods and services	1.5	0.5	0.9	0.7	-13.1	-2.7	-2.1	-2.5	16.0
GDP	1.7	1.9	1.6	-2.0	-14.0	-4.3	-4.9	-0.5	14.9

MAIN COMPONENTS OF VALUE ADDED<sup>(1)</sup>

Industry	2.0	3.3	2.5	-0.2	-13.1	-4.0	0.7	4.7	21.4
Construction	3.7	3.5	4.4	-1.8	-15.0	-1.2	-1.2	5.1	22.1
Services	1.7	1.6	1.2	-1.9	-13.6	-4.7	-5.7	-2.0	12.7
GDP	1.7	1.9	1.6	-2.0	-14.0	-4.3	-4.9	-0.5	14.9



Sources: Belgium (NAI); Euro area, EU-27 (Eurostat).

(1) Adjusted for seasonal and calendar effects.

(2) Euro area = EA19.

(3) Percentage changes versus previous quarter.

(4) Flash estimate.

# Activity and labour market indicators

## Activity

NBB.Stat

	2020					2021							
	A	S	O	N	D	J	F	M	A	M		J	J
	<i>(percentage changes in the average for the last 3 months compared to the corresponding period of the previous year)</i>												
Industrial production, excluding building <sup>(1)</sup>	-5.5	-3.7	-1.7	1.4	1.5	1.1	1.0	7.3	17.7	23.6	27.7	23.8	n.
New car registrations including mixed cars	-9.1	-9.1	-12.0	-16.7	-20.1	-26.4	-21.0	-6.4	46.8	69.9	26.9	-19.4	-26.4

	2019				2020				2021	
	I	II	III	IV	I	II	III	IV	I	II
	<i>(percentage changes compared to the corresponding period of the previous year)</i>									
Total turnover <sup>(2)</sup>	2.3	-0.5	0.7	-0.3	-4.2	-19.6	-6.9	-4.2	3.7	36.0
Investments <sup>(2)</sup>	5.7	2.9	2.7	-3.7	-2.6	-22.2	-8.9	-4.5	5.2	33.8

## Labour market

### EMPLOYMENT NBB.Stat

	2019				2020				2021	
	I	II	III	IV	I	II	III	IV	I	II
Belgium	<i>(in thousands)</i>									
Domestic employment <sup>(3)</sup>	4865.4	4883.0	4903.7	4923.0	4909.4	4871.5	4881.0	4910.0	4918.3	4952.2
	<i>(percentages of the population of working age)</i>									
Employment rate <sup>(4)</sup> 15-64 years	64.5	65.6	65.8	65.3	65.1	64.2	65.1	64.5	63.6	n.
20-64 years	69.8	71.0	70.7	70.5	70.4	69.6	70.2	69.9	69.0	n.
International comparison of the employment rate <sup>(4)</sup>										
Euro area <sup>(5)</sup> 15-64 years	67.3	68.0	68.2	68.3	67.6	66.3	67.1	67.4	66.3	n.
20-64 years	72.0	72.7	72.8	72.9	72.2	70.9	71.6	72.1	70.9	n.
EU-27 15-64 years	67.7	68.5	68.8	68.6	68.0	66.9	67.7	67.9	66.8	n.
20-64 years	72.4	73.2	73.4	73.3	72.7	71.6	72.4	72.7	71.5	n.

### UNEMPLOYMENT NBB.Stat

	2020					2021							
	A	S	O	N	D	J	F	M	A	M		J	J
Belgium	<i>(in thousands. end of period)</i>												
Unemployment <sup>(6)</sup>	527	508	491	487	491	495	489	477	468	451	447	476	483
< 25 years old	99	99	90	86	84	84	82	78	74	70	68	81	87
≥ 25 years old	427	409	401	401	407	411	407	399	393	382	379	396	396
	<i>(percentages of the labour force)</i>												
Harmonised unemployment rate <sup>(7)</sup>	6.4	6.3	5.8	5.8	6.0	6.4	6.7	6.8	6.7	6.5	6.2	5.9	n.
International comparison of harmonised unemployment rate <sup>(7)</sup>													
Euro area <sup>(5)</sup>	8.6	8.6	8.4	8.1	8.1	8.2	8.1	8.1	8.2	8.0	7.8	7.6	n.
EU-27	7.7	7.7	7.5	7.3	7.4	7.4	7.4	7.4	7.5	7.3	7.1	6.9	n.

Sources: NBB; Statbel. SMEs. Self-employed and Energy; NEO; FEBIAC; Eurostat; NAI.

(1) Following a change in the data collection at Statbel from January 2020, this series has been revised and now includes only data relating to the mining and quarrying industries, manufacturing and electricity, gas, steam and air conditioning supply (sections B - C - D).

(2) Based on VAT-declaration.

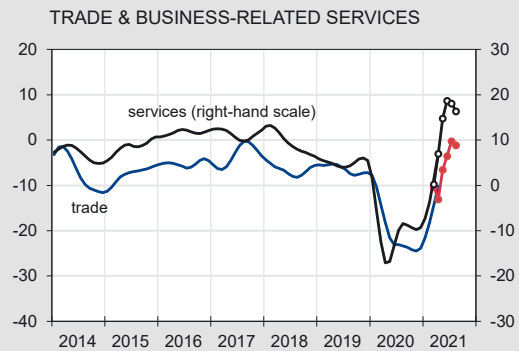
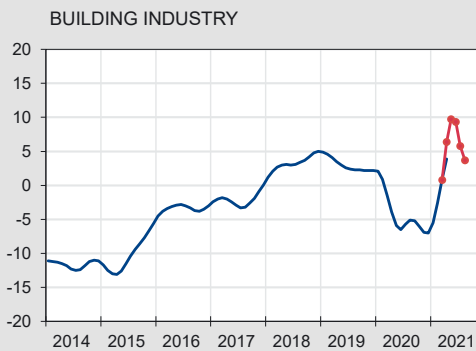
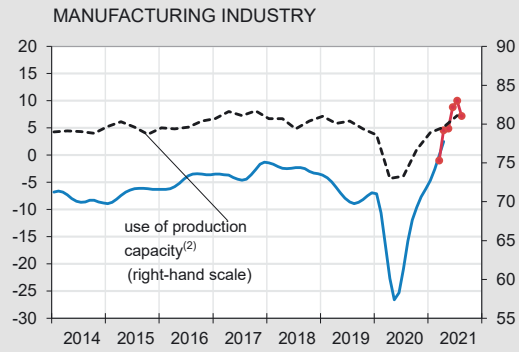
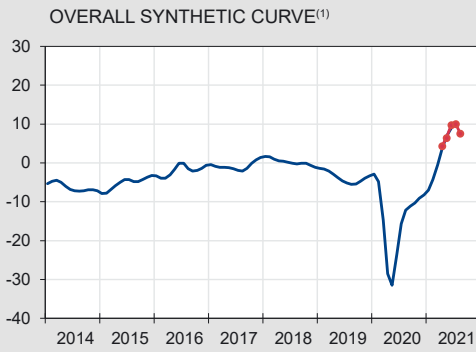
(3) Quarterly average of the number of employees and self-employed persons, seasonally adjusted.

(4) Harmonised data from the quarterly labour force survey (LFS), unadjusted data. Break in series in 2017-I due to the reform and modernization of the LFS.

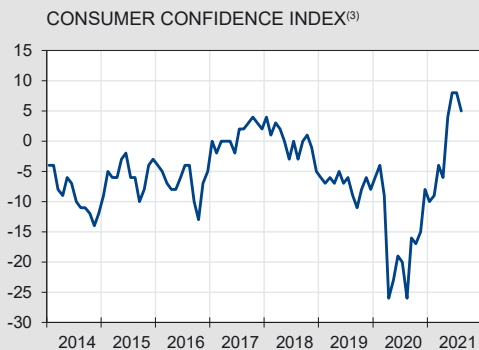
(5) Euro area = EA19.

(6) Fully unemployed persons receiving benefits, compulsorily and voluntarily registered job-seekers; gross data.

(7) This series corresponds with the results of the Labour Force Survey (LFS, group of 15-74 years), monthly adjusted by using the administrative national unemployment figures, in accordance with the Eurostat's methodology.



— Seasonally adjusted and smoothed series  
 — Seasonally adjusted series



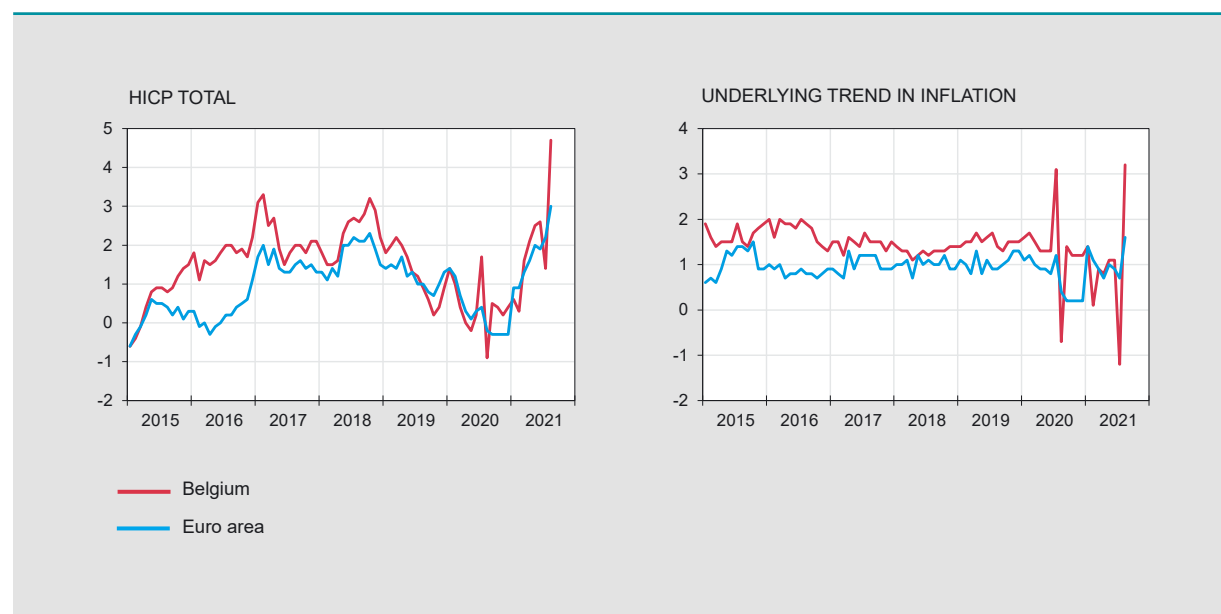
Source: NBB.

- (1) Weighted average of the synthetic curve of manufacturing industry, building industry, trade and business-related services.
- (2) Percentage of production capacity utilisation, seasonally adjusted.
- (3) Includes expectations on the general economic situation, unemployment, financial situation and saving capacity.
- (4) Over the next 12 months.

# Harmonised index of consumer prices

## Annual data

	2015	2016	2017	2018	2019	2020
<i>(percentage changes compared to the previous year)</i>						
<b>BELGIUM</b>						
Total HICP	0.6	1.8	2.2	2.3	1.2	0.4
Energy	-8.0	-0.6	9.9	8.9	-0.8	-11.0
Unprocessed food <sup>(1)</sup>	2.1	2.6	-0.2	1.8	-0.4	4.7
Processed food	1.6	3.5	1.8	2.9	1.7	2.1
Underlying trend in inflation <sup>(2)</sup>	1.6	1.8	1.5	1.3	1.5	1.4
Non-energy industrial goods	0.5	1.0	0.8	0.8	1.0	0.7
Services	2.4	2.2	1.9	1.6	1.8	1.8
<i>p.m.</i> National index of consumer prices						
General index	0.6	2.0	2.1	2.1	1.4	0.7
Health index <sup>(3)</sup>	1.1	2.1	1.8	1.8	1.5	1.0
<b>EURO AREA<sup>(4)</sup></b>						
Total HICP	0.2	0.2	1.5	1.8	1.2	0.3
Energy	-6.8	-5.1	4.9	6.4	1.1	-6.8
Unprocessed food <sup>(1)</sup>	1.6	1.4	2.4	2.3	1.4	4.0
Processed food	0.6	0.6	1.5	2.1	1.9	1.8
Underlying trend in inflation <sup>(2)</sup>	1.1	0.8	1.0	1.0	1.0	0.7
Non-energy industrial goods	0.3	0.4	0.3	0.3	0.3	0.2
Services	1.5	1.1	1.4	1.5	1.5	1.0



Sources: Eurostat; Statbel. SMEs, Self-employed and Energy.

(1) Fruit, vegetables, meat and fish.

(2) HICP excluding food and energy.

(3) General index excluding products which are harmful to the health (tobacco, alcohol, petrol and diesel).

(4) Euro area = EA11-2000, EA12-2006, EA13-2007, EA15-2008, EA16-2010, EA17-2013, EA18-2014, EA19.

# ■ Harmonised index of consumer prices (continued)

Monthly data [NBB.Stat](#)

	2020					2021							
	A	S	O	N	D	J	F	M	A	M	J	J	A
<i>(percentage changes compared to the corresponding month of the previous year)</i>													
<b>BELGIUM</b>													
Total HICP	-0.9	0.5	0.4	0.2	0.4	0.6	0.3	1.6	2.1	2.5	2.6	1.4	4.7
Energy	-10.6	-11.9	-11.0	-11.1	-9.2	-6.7	0.1	8.7	16.2	19.8	18.8	22.1	24.5
Unprocessed food <sup>(1)</sup>	5.4	7.2	6.7	4.3	2.0	-1.4	-0.9	-1.9	-2.7	-3.3	-3.5	-3.6	-2.3
Processed food	2.4	2.1	2.1	1.6	1.7	1.6	1.3	1.1	0.9	1.0	1.4	1.6	1.6
Underlying trend in inflation <sup>(2)</sup>	-0.7	1.4	1.2	1.2	1.2	1.4	0.1	0.9	0.8	1.1	1.1	-1.2	3.2
Non-energy industrial goods	-4.6	0.8	0.6	0.7	0.6	1.7	-1.6	0.3	0.3	0.4	0.4	-4.3	6.5
Services	1.7	1.8	1.6	1.5	1.7	1.4	1.2	1.3	1.2	1.6	1.6	1.0	1.3
<i>p.m.</i> National index of consumer prices													
General index	0.7	0.8	0.9	0.7	0.5	0.4	0.3	0.5	0.9	1.2	1.6	2.3	2.7
Health index <sup>(3)</sup>	1.0	1.0	1.1	1.0	0.8	0.6	0.6	0.5	0.6	0.6	1.1	1.8	2.3
<b>EURO AREA<sup>(4)</sup></b>													
Total HICP	-0.2	-0.3	-0.3	-0.3	-0.3	0.9	0.9	1.3	1.6	2.0	1.9	2.2	3.0
Energy	-7.8	-8.2	-8.2	-8.3	-6.9	-4.2	-1.7	4.3	10.4	13.1	12.6	14.3	15.4
Unprocessed food <sup>(1)</sup>	2.3	3.1	4.3	4.2	2.1	2.0	1.5	1.6	-0.3	0.0	-0.3	1.9	3.0
Processed food	1.5	1.4	1.3	1.2	1.1	1.3	1.3	1.0	0.9	0.7	0.8	1.5	1.7
Underlying trend in inflation <sup>(2)</sup>	0.4	0.2	0.2	0.2	0.2	1.4	1.1	0.9	0.7	1.0	0.9	0.7	1.6
Non-energy industrial goods	-0.1	-0.3	-0.1	-0.3	-0.5	1.5	1.0	0.3	0.4	0.7	1.2	0.7	2.6
Services	0.7	0.5	0.4	0.6	0.7	1.4	1.2	1.3	0.9	1.1	0.7	0.9	1.1

Sources: Eurostat; Statbel. SMEs. Self-employed and Energy.

(1) Fruit, vegetables, meat and fish.

(2) HICP excluding food and energy.

(3) General index excluding products which are harmful to the health (tobacco, alcohol, petrol and diesel).

(4) Euro area = EA11-2000, EA12-2006, EA13-2007, EA15-2008, EA16-2010, EA17-2013, EA18-2014, EA19.

## General government - EDP definition<sup>(1)</sup>

	2016	2017	2018	2019	2020
	<i>(percentages of GDP)</i>				
<b>REVENUE</b>					
Fiscal and para-fiscal revenue	43.6	44.2	44.2	43.1	43.5
Direct taxes	16.0	16.6	16.8	15.7	15.9
Indirect taxes	13.4	13.3	13.4	13.4	13.2
Actual social contributions	13.5	13.4	13.3	13.3	13.7
Capital taxes	0.8	0.8	0.8	0.7	0.7
Non-fiscal and non-para-fiscal revenue <sup>(2)</sup>	7.1	7.2	7.2	7.1	7.1
<b>Total</b>	<b>50.8</b>	<b>51.3</b>	<b>51.4</b>	<b>50.2</b>	<b>50.6</b>
<b>PRIMARY EXPENDITURE</b>					
Social benefits <sup>(3)</sup>	24.7	24.6	24.6	24.6	28.4
Other expenditures	25.8	25.1	25.5	25.5	29.6
<b>Total</b>	<b>50.4</b>	<b>49.7</b>	<b>50.1</b>	<b>50.1</b>	<b>58.0</b>
<b>PRIMARY BALANCE</b>	<b>0.3</b>	<b>1.7</b>	<b>1.3</b>	<b>0.1</b>	<b>-7.4</b>
<b>INTEREST CHARGES</b>	<b>2.7</b>	<b>2.4</b>	<b>2.1</b>	<b>2.0</b>	<b>2.0</b>
<b>OVERALL BALANCE</b>	<b>-2.4</b>	<b>-0.7</b>	<b>-0.8</b>	<b>-1.9</b>	<b>-9.4</b>
<i>p.m.</i> FOR THE SUBSECTORS					
Federal government	-2.6	-1.3	-0.2	-1.9	-7.2
Social security	-0.1	0.2	0.0	0.3	0.1
Communities and regions	0.0	0.2	-0.4	-0.2	-2.4
Local authorities	0.2	0.2	-0.1	0.0	0.1
<b>INTERNATIONAL COMPARISON</b>					
Primary balance					
Belgium	0.3	1.7	1.3	0.1	-7.4
Euro area <sup>(4)</sup>	0.6	1.0	1.4	1.0	-5.7
EU-27	0.6	1.0	1.3	1.0	-5.5
Overall balance					
Belgium	-2.4	-0.7	-0.8	-1.9	-9.4
Euro area <sup>(4)</sup>	-1.5	-0.9	-0.5	-0.6	-7.2
EU-27	-1.4	-0.8	-0.4	-0.5	-6.9
Consolidated gross debt					
Belgium	105.0	102.0	99.8	98.1	114.1
Euro area <sup>(4)</sup>	90.1	87.7	85.7	83.9	98.0
EU-27	84.0	81.5	79.5	77.5	90.7

Sources: NAI, NBB, Eurostat.

(1) Excessive Deficit Procedure (EDP), definition of the Treaty on the Functioning of the European Union.

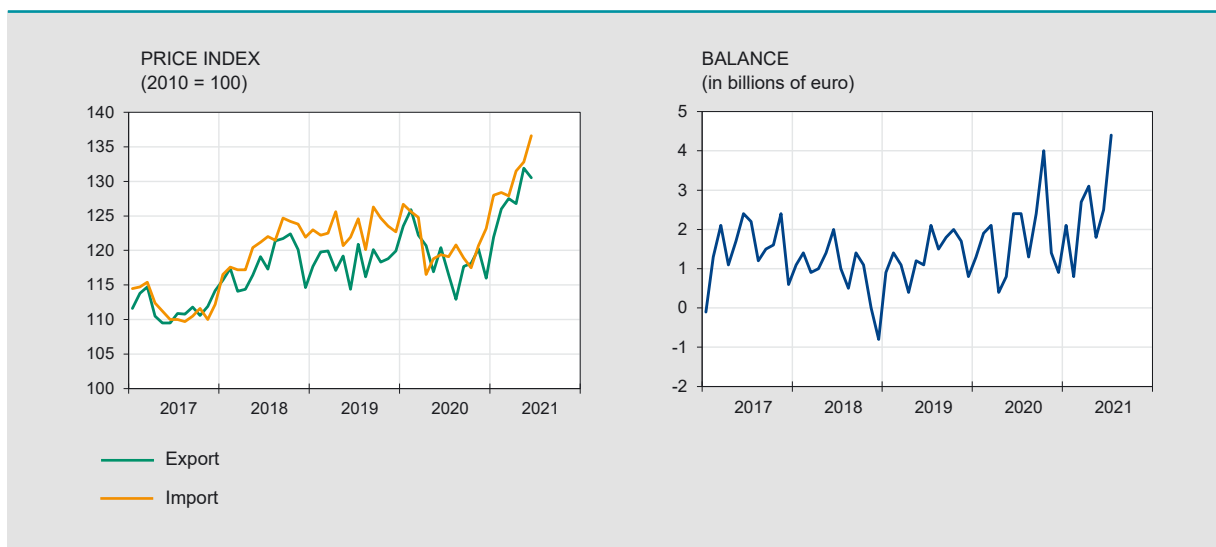
(2) Property income, imputed social security contributions, transfers from other sectors and sales of goods and services.

(3) From social security and all other subsectors of general government.

(4) Euro area = EA19.



VALUE	2020						2021						
	J	A	S	O	N	D	J	F	M	A	M	J	J
<i>(billions of euro)</i>													
Monthly data													
Export	30.0	27.3	32.8	33.8	32.1	31.7	31.3	31.3	39.3	37.0	36.3	39.9	35.9
Import	27.5	26.0	30.4	29.8	30.6	30.8	29.2	30.5	36.7	33.8	34.4	37.4	31.6
Balance	2.4	1.3	2.4	4.0	1.4	0.9	2.1	0.8	2.7	3.1	1.8	2.5	4.4
Cumulative data over the last 12 months													
Export	374.3	371.8	371.1	369.1	368.3	369.6	366.7	364.6	370.7	382.9	393.6	402.7	408.7
Import	355.1	352.8	351.4	347.5	347.0	348.2	344.4	343.4	348.9	358.4	368.1	377.2	381.3
Balance	19.2	19.0	19.6	21.5	21.3	21.5	22.3	21.2	21.8	24.5	25.5	25.5	27.5
<i>(percentage changes in the last 12 months compared to the preceding 12 months)</i>													
PRICE													
Export	0.7	0.8	0.8	1.1	1.3	0.6	0.1	-0.3	-0.1	0.1	1.3	1.5	n.
Import	-0.6	-0.4	-1.0	-1.6	-1.7	-1.8	-1.9	-1.9	-1.9	-0.3	0.8	2.1	n.
Terms of trade	1.3	1.3	1.9	2.7	3.0	2.4	2.1	1.7	1.9	0.3	0.4	-0.6	n.
VOLUME													
Export	-7.1	-7.5	-7.8	-8.6	-8.8	-8.1	-8.4	-8.8	-7.2	-2.0	2.0	4.6	n.
Import	-8.5	-8.7	-8.5	-8.9	-8.3	-7.8	-8.6	-8.9	-6.9	-3.4	0.6	2.7	n.
Coverage ratio	1.5	1.3	0.8	0.3	-0.5	-0.3	0.2	0.1	-0.3	1.4	1.4	1.9	n.

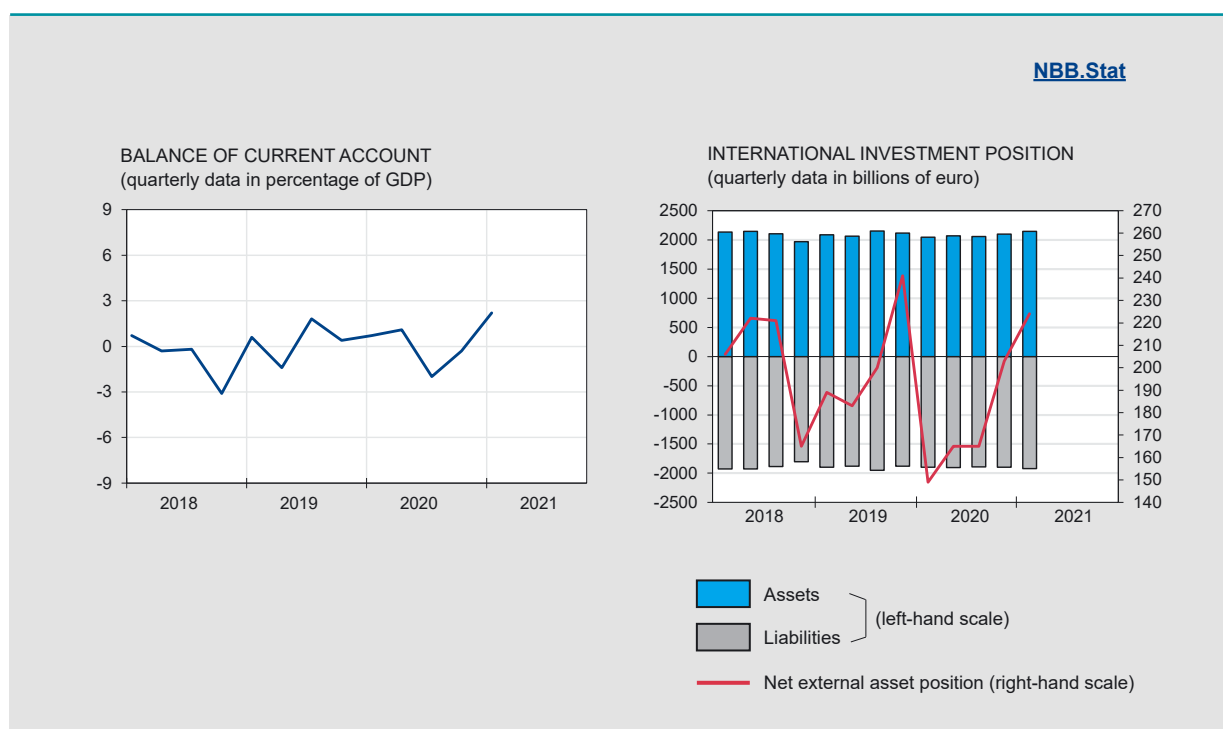


Source: NAI.

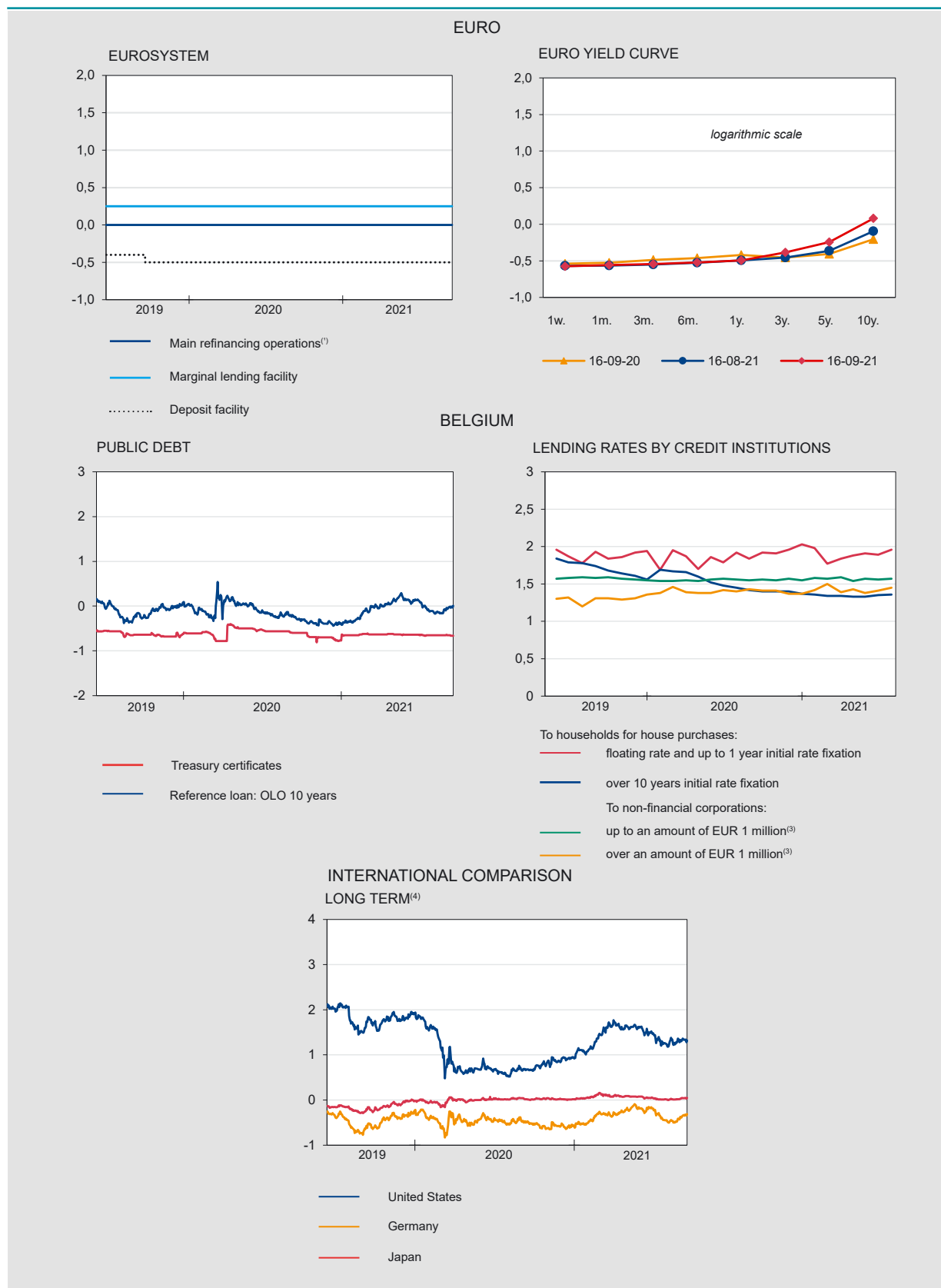
(1) From 15/01/2020 the focus on the evolution of foreign trade will be shifted to the community concept instead of the national concept. The figures on the NBB.Stat website remain fully available in national and in community concept.

# Balance of payments [NBB.Stat](#)

	2020										2021		
	M	A	M	J	J	A	S	O	N	D	J	F	M
	<i>(cumulative data over the last 12 months, in billions of euro)</i>												
CURRENT ACCOUNT	1.8	2.1	5.4	4.5	3.1	1.0	0.2	1.7	1.3	-0.7	0.6	0.8	1.0
Goods	3.1	2.7	3.1	3.3	2.2	1.0	0.2	1.5	1.1	1.0	2.6	2.8	3.6
Services	0.3	0.9	2.3	2.2	2.1	1.5	1.6	2.1	1.9	0.7	0.9	1.5	1.1
Primary incomes	5.8	5.7	7.3	6.1	5.9	5.9	5.7	5.3	6.2	5.6	5.1	4.8	4.8
Secondary incomes	-7.4	-7.2	-7.3	-7.1	-7.2	-7.3	-7.4	-7.3	-7.9	-8.0	-7.9	-8.4	-8.5
CAPITAL ACCOUNT	0.6	0.5	0.4	0.4	0.4	0.3	0.3	0.2	0.1	-0.1	0.4	0.4	0.4
FINANCIAL ACCOUNT	2.4	0.9	7.6	4.6	4.9	0.5	-0.7	-2.3	-4.7	-3.4	-1.2	-2.1	-2.2
Direct investment	-9.7	-7.0	2.4	-3.7	-1.8	3.6	1.1	3.8	7.2	1.6	1.5	2.0	4.1
Equity capital	29.5	29.7	22.5	23.1	21.2	22.5	19.9	19.8	15.7	11.3	8.4	8.8	9.8
Other capital	-39.2	-36.7	-20.1	-26.7	-23.0	-19.0	-18.8	-16.0	-8.5	-9.8	-6.9	-6.8	-5.6
Portfolio investment	5.6	13.9	23.4	13.8	16.7	18.0	24.6	27.2	15.4	20.1	23.3	30.0	9.7
Financial derivatives	2.1	0.6	2.0	1.3	-0.3	-1.5	1.7	1.9	0.5	0.0	-1.2	-1.1	-1.1
Other transactions	4.4	-6.7	-20.4	-7.1	-10.1	-19.9	-28.3	-35.7	-28.1	-25.9	-25.5	-33.6	-15.5
NBB's reserves	0.1	0.1	0.2	0.3	0.4	0.3	0.1	0.4	0.4	0.9	0.7	0.6	0.6
ERRORS AND OMISSIONS	0.0	-1.7	1.9	-0.3	1.5	-0.8	-1.2	-4.2	-6.1	-2.6	-2.2	-3.3	-3.6

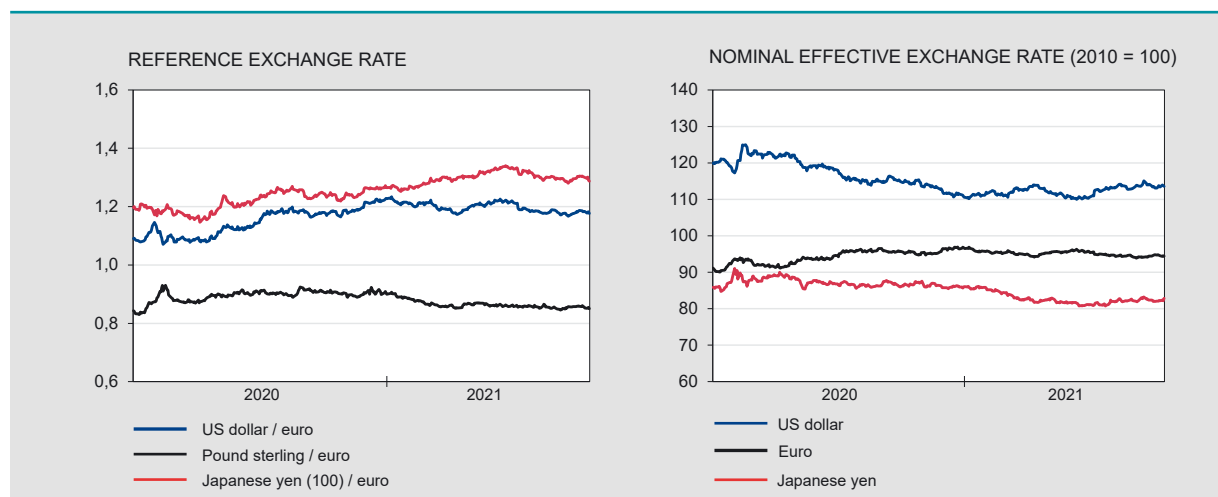


Sources: NBB, NAI.

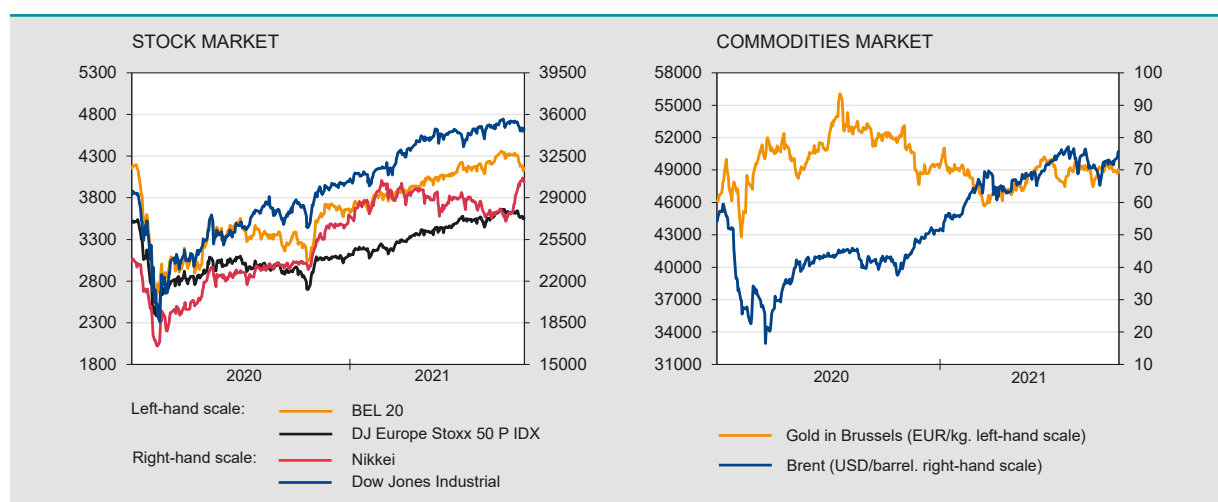


# Financial markets (continued)

## Exchange rates [NBB.Stat](#)



## Stock and commodities market [NBB.Stat](#)



Sources: ECB, BIS, Euronext.

## Monetary aggregates<sup>(1)</sup> [NBB.Stat](#)

	2020					2021							
	J	A	S	O	N	D	J	F	M	A	M	J	J
<i>(end of period, in billions of euro)</i>													
<b>EURO AREA</b>													
M3 excluding currency in circulation	12702	12712	12803	12909	13018	13121	13173	13219	13302	13377	13470	13546	13674
M3	14023	14039	14133	14247	14367	14491	14546	14600	14693	14776	14883	14969	15112
of which: by MFI <sup>(2)</sup> in BELGIUM													
Deposits													
overnight	251.0	250.3	252.3	254.4	260.7	263.3	260.6	261.9	264.4	265.5	270.7	272.7	273.0
with agreed maturity up to 2 years	13.7	13.2	12.1	14.3	12.9	12.7	10.7	10.8	9.2	9.4	11.0	10.9	11.4
redeemable at notice up to 3 months	334.7	335.7	334.9	335.0	336.2	336.8	338.5	340.2	341.2	341.2	343.1	343.7	341.4
Others M3 <sup>(3)</sup> components	30.5	29.1	28.8	29.4	28.4	27.4	29.9	28.7	26.0	25.9	26.0	28.8	28.3
M3 <sup>(3)</sup>	629.9	628.3	628.1	633.1	638.2	640.2	639.7	641.6	640.9	642.0	650.8	656.1	654.2

Sources: NBB, ECB.

(1) M3 comprises currency in circulation, deposits with agreed maturity up to 2 years, repurchase agreements (exclude the Repurchase agreements with Central counterparties - CCPs), money market fund shares/units, money market paper and debt securities up to 2 years.

(2) Monetary Financial Institutions.

(3) Excluding currency in circulation.

	2018	2019				2020				2021
	IV	I	II	III	IV	I	II	III	IV	I
	<i>(end of period outstanding amounts in billions of euro)</i>									
<b>FINANCIAL ASSETS</b>										
Individuals	1315.2	1363.1	1382.8	1403.6	1409.1	1348.4	1407.0	1419.4	1464.2	1478.2
General government	206.4	210.4	218.2	220.2	216.2	221.5	245.9	231.5	227.6	229.7
Non-financial corporations	1366.6	1414.7	1391.7	1445.7	1438.7	1393.8	1398.3	1406.3	1468.7	1485.4
<b>FINANCIAL LIABILITIES</b>										
Individuals	289.4	294.2	298.9	301.5	308.1	306.5	309.5	313.1	315.9	319.9
General government	591.0	612.2	627.0	647.1	618.7	652.2	694.0	686.7	687.3	682.1
Non-financial corporations	1843.5	1885.6	1883.1	1916.6	1899.5	1874.5	1889.6	1898.2	1969.1	1970.5
<b>NET FINANCIAL WEALTH</b>										
Individuals	1025.8	1068.9	1083.9	1102.0	1101.0	1041.9	1097.5	1106.3	1148.3	1158.3
General government	-384.6	-401.8	-408.8	-426.9	-402.5	-430.7	-448.1	-455.2	-459.7	-452.4
Non-financial corporations	-476.9	-470.8	-491.4	-470.8	-460.8	-480.7	-491.3	-491.9	-500.3	-485.1

Source: NBB.

## Conventional signs

- indicates data which have been updated since the previous publication.
- 0.0 nil or less than half the smallest digit considered.
- data non-existent or meaningless.
- n. not available.
- e estimate.

## Information

We suggest people wanting more information about the contents, the methodology, the methods of calculations and the sources to get in touch with the Statistical information systems of the National Bank of Belgium.

Nino Di Zinno tel.: +32 2 221 21 36  
 Franky Van De Walle tel.: +32 2 221 29 67  
 E-mail: [datashop@nbb.be](mailto:datashop@nbb.be)

Editor  
 Rudi Acx  
 Head of the General Statistics Department

National Bank of Belgium  
 boulevard de Berlaimont 14 BE-1000 Brussels

Closing date 2021-09-17 Next issue: 2021-09-24

All rights reserved.  
 Reproduction for educational and non-commercial purposes is permitted provided that the source is acknowledged.