

Economic indicators for Belgium



WEEKLY PUBLICATION

N° 2020-48 2020-11-27

Summary

	ACTUAL FIGURES*			FORECASTS**									
	2017	2018	2019	2020					2021				
				NBB	ECB	EC	OECD	BPN***	NBB	ECB	EC	OECD	BPN***
<i>(percentage changes compared to the previous year)</i>													
REAL GDP													
Belgium													
Final consumption													
private	1.9	1.9	1.5	-7.7	-	-10.0	-12.5/-15.8	-	9.2	-	5.3	10.0/6.5	-
public	0.1	1.2	1.7	3.0	-	1.0	-0.9/-0.4	-	-0.3	-	1.7	0.2/-0.3	-
Gross fixed capital formation	1.4	3.4	3.4	-18.4	-	-13.7	-15.9/-20.4	-	10.0	-	5.9	11.8/6.4	-
Exports of goods and services	5.5	0.6	1.0	-11.9	-	-8.6	-9.1/-11.7	-	8.1	-	5.0	7.0/3.3	-
Imports of goods and services	5.2	1.3	0.8	-11.5	-	-8.4	-10.5/-13.6	-	8.8	-	5.4	8.8/4.9	-
GDP	1.6	1.8	1.7	-9.0	-	-8.4	-8.9/-11.2	-7.9	6.4	-	4.1	6.4/3.4	5.8
International comparison of GDP													
Euro area ⁽¹⁾	2.6	1.9	1.3	-	-8.0	-7.8	-9.1/-11.5	-7.6	-	5.0	4.2	6.5/3.5	5.7
EU-27	2.8	2.1	1.5	-	-	-7.4	-	-	-	-	4.1	-	-
CONSUMER PRICES													
Belgium	<i>(percentage changes compared to the previous year)</i>												
HICP	2.2	2.3	1.2	0.3	-	0.4	0.4/0.3	0.5	1.4	-	1.4	0.7/0.2	1.3
National general index	2.1	2.1	1.4	0.6	-	-	-	-	1.1	-	-	-	-
National health index	1.8	1.8	1.5	1.0	-	-	-	-	1.1	-	-	-	-
International comparison of HICP													
Euro area ⁽³⁾	1.5	1.8	1.2	-	0.3	0.3	0.4/0.4	0.3	-	1.0	1.1	0.5/0.2	1.0
EU-27	1.6	1.8	1.4	-	-	0.7	-	-	-	-	1.3	-	-
LABOUR COSTS IN THE PRIVATE SECTOR⁽²⁾													
Belgium	<i>(percentage changes compared to the previous year)</i>												
Labour costs per hour worked	1.4	1.4	2.3	1.3	-	-	-	-	1.6	-	-	-	-
Unit labour costs	1.2	1.8	2.3	3.9	-	7.2	-	-	-0.1	-	-0.8	-	-
Unit labour costs													
Euro area ⁽¹⁾	0.7	1.9	1.9	-	4.3	4.2	-	-	-	-1.7	-0.5	-	-
EU-27	1.0	2.2	2.1	-	-	4.5	-	-	-	-	-0.6	-	-

* Sources: Belgium (NAI, NBB, Statbel, EC); Euro area, EU-27 (ECB, Eurostat).

** The 2020 and 2021 forecasts from the NBB are consistent with the estimates from June 2020 in the Economic Revue (next update - Economic Revue December 2020).

Users should be aware that estimates of this kind can sometimes be out of date owing to changes in the information available. The older the estimates, the greater this risk becomes. Publication of the estimate therefore simply means that it is the latest estimate released by the NBB.

ECB staff macroeconomic projections September 2020 (next issue December 2020);

OECD Economic Outlook June 2020 (next release December 2020). The first data in the range are based on the hypothesis that another major outbreak will be avoided. The second data are based on the hypothesis of a second wave of Covid19 infections with renewed lockdown before the end of 2020;

EC European Economic Forecast Autumn 2020 (next release Spring 2021) and BPN September 2020 (next release December 2020).

*** Average of the credit institutions which participate in the «Belgian Prime News».

(1) Euro area = EA19, except the OECD forecasts.

(2) Except for the actual figures of the Euro area and the EU-27 and the EC and OECD forecasts which pertain to the whole economy.

(3) Euro area = EA11-2000, EA12-2006, EA13-2007, EA15-2008, EA16-2010, EA17-2013, EA18-2014, EA19.

Summary (continued)

	ACTUAL FIGURES*						FORECASTS**						
	2017	2018	2019	2020			2021						
				NBB	ECB	EC	OECD	BPN***	NBB	ECB	EC	OECD	BPN***
LABOUR MARKET													
<i>(annual changes in percentages)</i>													
Belgium													
Total employment	1.6	1.5	1.6	-1.4	-	-0.7	-	-0.9	-0.5	-	-1.0	-	-0.8
Unemployment	-5.0	-5.8	-3.8	21.4	-	-	-	-	7.8	-	-	-	-
<i>(annual changes in thousands)</i>													
Total employment	74.0	70.7	76.8	-66.7	-	-35.0	-	-	-22.7	-	-48.6	-	-
Unemployment	-27.5	-30.4	-18.8	102.1	-	-	-	-	44.9	-	-	-	-
<i>(annual averages in percentages of labour force)</i>													
Harmonised unemployment rate ⁽¹⁾	7.1	6.0	5.4	7.3	-	5.9	7.4/8.2	6.7	8.3	-	7.0	6.5/9.3	7.8
International comparison of harmonised unemployment rate ⁽¹⁾													
Euro area ⁽²⁾	9.0	8.1	7.5	-	8.5	8.3	9.8/10.3	8.3	-	9.5	9.4	9.5/11.0	9.5
EU-27	8.1	7.2	6.7	-	-	7.7	-	-	-	-	8.6	-	-
GENERAL GOVERNMENT													
<i>(percentages of GDP)</i>													
Belgium													
Primary balance	1.7	1.3	0.0	-8.6	-	-9.2	-6.8/-9.2	-	-4.1	-	-5.2	-2.4/-6.7	-
Overall balance	-0.7	-0.8	-1.9	-10.6	-	-11.2	-8.6/-11.0	-9.9	-6.0	-	-7.1	-3.8/-8.3	-5.4
Consolidated gross debt	102.0	99.8	98.1	118.1	-	117.7	115.3/120.3	115.6	116.5	-	117.8	112.4/124.9	112.2
International comparison of overall balance													
Euro area ⁽²⁾	-0.9	-0.5	-0.6	-	-8.8	-8.8	-9.2/-10.9	-9.2	-	-4.9	-6.4	-5.1/-8.3	-4.6
EU-27	-0.8	-0.4	-0.5	-	-	-8.4	-	-	-	-	-6.1	-	-
CURRENT ACCOUNT													
<i>(percentages of GDP)</i>													
Belgium													
	0.7	-0.8	0.3	-0.3	-	0.7	-0.1/0.3	0.1	-0.4	-	0.6	-1.4/-1.0	0.7
International comparison													
Euro area ⁽²⁾	3.1	2.9	2.3	-	2.0	1.8	2.7/2.6	2.0	-	2.6	1.9	2.6/2.2	2.2
EU-27	3.0	2.8	2.4	-	-	1.9	-	-	-	-	2.0	-	-

* Sources: Belgium (NAI, NBB, Statbel, EC); Euro area, EU-27 (ECB, Eurostat).

** The 2020 and 2021 forecasts from the NBB are consistent with the estimates from June 2020 in the Economic Review (next update - Economic Review December 2020).

Users should be aware that estimates of this kind can sometimes be out of date owing to changes in the information available. The older the estimates, the greater this risk becomes. Publication of the estimate therefore simply means that it is the latest estimate released by the NBB.

ECB staff macroeconomic projections September 2020 (next issue December 2020);

OECD Economic Outlook June 2020 (next release December 2020). The first data in the range are based on the hypothesis that another major outbreak will be avoided. The second data are based on the hypothesis of a second wave of Covid19 infections with renewed lockdown before the end of 2020;

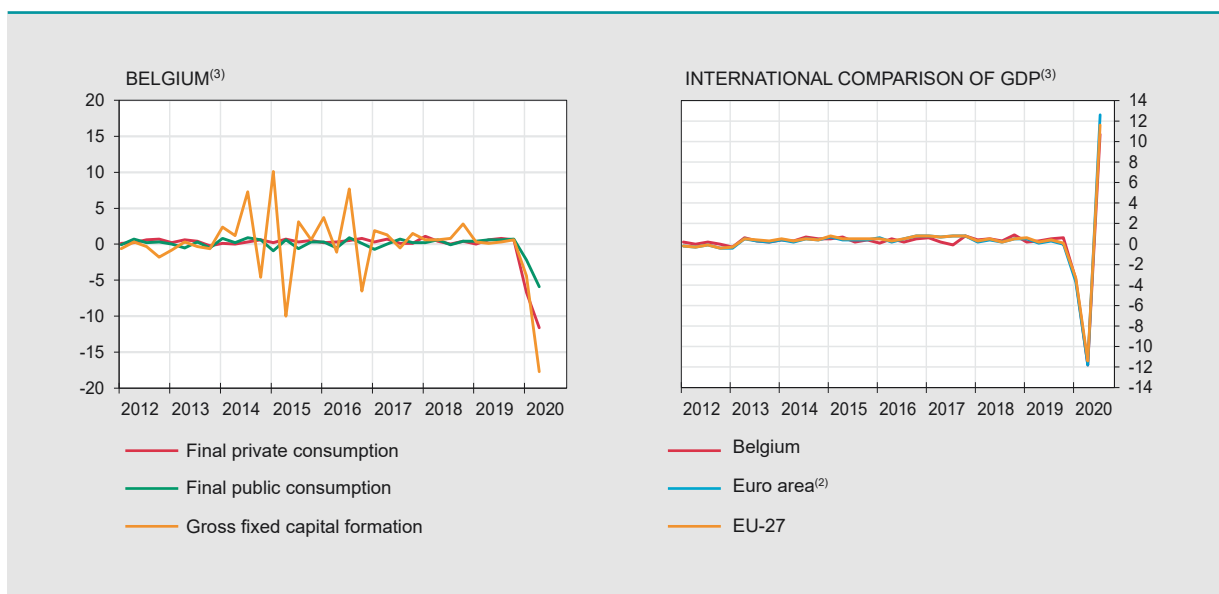
EC European Economic Forecast Autumn 2020 (next release Spring 2021) and BPN September 2020 (next release December 2020).

*** Average of the credit institutions which participate in the «Belgian Prime News».

(1) This series corresponds with the results of the Labour Force Survey (LFS, Population older than 15 years), monthly adjusted by using the administrative national unemployment figures, in accordance with the Eurostat's methodology.

(2) Euro area = EA19, except the OECD forecasts.

	2018		2019				2020		
	III	IV	I	II	III	IV	I	II	III
GDP ⁽¹⁾									
Belgium									
<i>(millions of euro)</i>									
GDP in chained 2015 euros	109 214	110 154	110 329	110 673	111 234	111 912	108 088	95 315	n.
<i>(percentage changes)</i>									
vs the previous quarter	0.3	0.9	0.2	0.3	0.5	0.6	-3.4	-11.8	10.7 ⁽⁴⁾
vs the corresponding quarter of the previous year	2.1	2.1	1.8	1.7	1.8	1.6	-2.0	-13.9	-5.2 ⁽⁴⁾
International comparison									
<i>(percentage changes)</i>									
vs the previous quarter									
Euro area ⁽²⁾	0.2	0.5	0.5	0.1	0.3	0.0	-3.7	-11.8	12.6 ⁽⁴⁾
EU-27	0.2	0.5	0.6	0.2	0.4	0.1	-3.3	-11.4	11.6 ⁽⁴⁾
vs the corresponding quarter of the previous year									
Euro area ⁽²⁾	1.6	1.2	1.5	1.3	1.4	1.0	-3.3	-14.8	-4.4 ⁽⁴⁾
EU-27	1.8	1.5	1.8	1.5	1.7	1.2	-2.7	-13.9	-4.3 ⁽⁴⁾
MAIN COMPONENTS OF EXPENDITURE ⁽¹⁾									
<i>(percentage changes compared to the corresponding quarter of the previous year)</i>									
Final private consumption	1.7	1.9	0.9	1.0	1.8	2.1	-4.8	-16.3	n.
Final public consumption	1.0	1.1	1.3	1.3	2.0	2.3	-0.3	-6.7	n.
Gross fixed capital formation	3.6	4.9	4.6	4.1	3.6	1.3	-3.5	-20.6	n.
business	3.0	3.4	3.5	3.3	3.5	2.5	-1.3	-21.5	n.
housing	2.2	7.5	7.6	8.6	3.7	1.3	-5.8	-20.2	n.
public	10.0	9.2	6.1	0.8	3.8	-5.5	-11.6	-15.4	n.
Exports of goods and services	0.9	-0.4	0.0	1.4	1.3	1.4	-0.4	-14.4	n.
Imports of goods and services	2.1	0.7	0.2	1.5	0.5	0.9	-1.2	-15.7	n.
GDP	2.1	2.1	1.8	1.7	1.8	1.6	-2.0	-13.9	-5.2 ⁽⁴⁾
MAIN COMPONENTS OF VALUE ADDED ⁽¹⁾									
Industry	-1.6	-1.2	1.0	2.0	3.3	2.5	-0.3	-13.1	n.
Construction	7.3	6.7	5.1	3.7	3.5	4.4	-1.8	-14.9	n.
Services	2.7	2.7	2.1	1.6	1.5	1.1	-2.0	-13.4	n.
GDP	2.1	2.1	1.8	1.7	1.8	1.6	-2.0	-13.9	-5.2 ⁽⁴⁾



Sources: Belgium (NAI); Euro area, EU-27 (Eurostat).

(1) Adjusted for seasonal and calendar effects.

(2) Euro area = EA19.

(3) Percentage changes versus previous quarter.

(4) Flash estimate.

Activity and labour market indicators

Activity

NBB.Stat

	2019			2020									
	O	N	D	J	F	M	A	M	J	J	A	S	O
	<i>(percentage changes in the average for the last 3 months compared to the corresponding period of the previous year)</i>												
Industrial production, excluding building ⁽¹⁾	6.0	4.2	4.8	3.3	5.4	0.7	-6.3	-10.6	-12.5	-7.0	-5.4	-3.7	n.
New car registrations including mixed cars	6.7	27.4	30.4	21.7	6.4	-18.3	-48.9	-56.8	-42.3	-12.2	-9.1	-9.1	-0.5

	2018				2019				2020	
	I	II	III	IV	I	II	III	IV	I	II
	<i>(percentage changes compared to the corresponding period of the previous year)</i>									
Total turnover ⁽²⁾	1.2	3.1	4.3	2.7	2.3	-0.5	0.7	-0.3	-4.2	-19.3
Investments ⁽²⁾	2.2	3.0	9.8	14.0	5.7	2.9	2.7	-3.7	-2.6	-21.8

Labour market

EMPLOYMENT NBB.Stat

	2018				2019				2020	
	I	II	III	IV	I	II	III	IV	I	II
Belgium	<i>(in thousands)</i>									
Domestic employment ⁽³⁾	4793.8	4811.5	4824.6	4842.7	4865.8	4883.3	4903.1	4923.0	4911.4	4874.0
	<i>(percentages of the population of working age)</i>									
Employment rate ⁽⁴⁾ 15-64 years	63.9	63.7	65.0	65.2	64.5	65.6	65.8	65.3	65.1	64.2
20-64 years	69.3	69.0	70.1	70.5	69.8	71.0	70.7	70.5	70.4	69.6
International comparison of the employment rate ⁽⁴⁾										
Euro area ⁽⁵⁾ 15-64 years	66.4	67.3	67.8	67.6	67.3	68.0	68.2	68.3	67.6	66.3
20-64 years	71.0	71.9	72.3	72.2	72.0	72.7	72.8	72.9	72.2	70.9
EU-27 15-64 years	66.8	67.7	68.2	67.9	67.7	68.5	68.8	68.6	68.0	66.9
20-64 years	71.4	72.4	72.8	72.6	72.4	73.2	73.4	73.3	72.7	71.6

UNEMPLOYMENT NBB.Stat

	2019			2020									
	O	N	D	J	F	M	A	M	J	J	A	S	O
Belgium	<i>(in thousands, end of period)</i>												
Unemployment ⁽⁶⁾	477	465	470	475	472	478	499	490	488	518	527	508	491
< 25 years old	89	84	83	83	81	80	83	81	80	94	99	99	90
≥ 25 years old	388	381	387	392	391	398	416	409	408	424	427	409	401
	<i>(percentages of the labour force)</i>												
Harmonised unemployment rate ⁽⁷⁾	5.2	5.2	5.2	5.1	5.0	5.0	5.1	5.0	5.0	5.0	5.1	5.2	n.
International comparison of harmonised unemployment rate ⁽⁷⁾													
Euro area ⁽⁵⁾	7.4	7.4	7.4	7.4	7.3	7.2	7.4	7.6	7.9	8.1	8.3	8.3	n
EU-27	6.6	6.6	6.5	6.6	6.5	6.5	6.7	6.9	7.2	7.4	7.5	7.5	n

Sources: NBB; Statbel, SMEs, Self-employed and Energy; NEO; FEBIAC; Eurostat; NAI.

(1) Following a change in the data collection at Statbel from January 2020, this series has been revised and now includes only data relating to the mining and quarrying industries, manufacturing and electricity, gas, steam and air conditioning supply (sections B - C - D).

(2) Based on VAT-declaration.

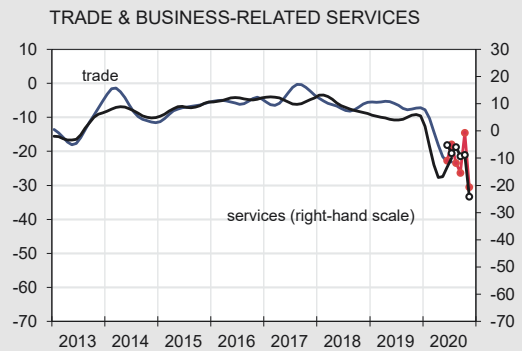
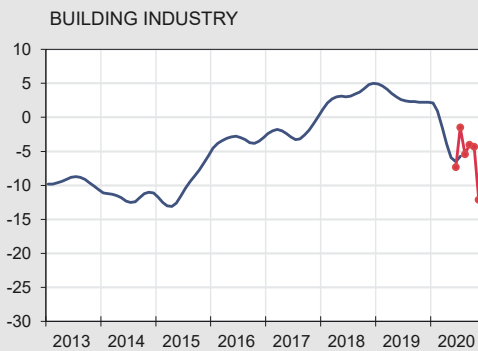
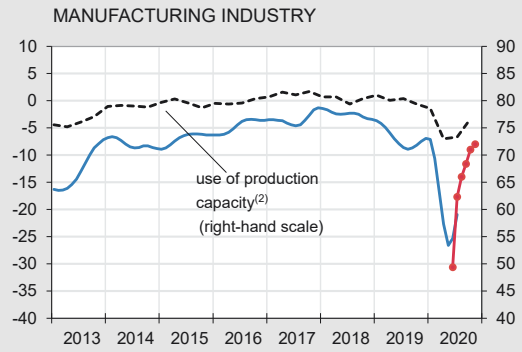
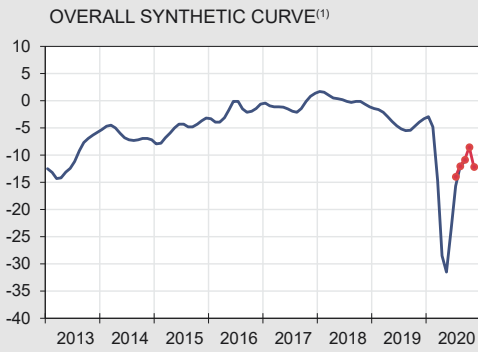
(3) Quarterly average of the number of employees and self-employed persons, seasonally adjusted.

(4) Harmonised data from the quarterly labour force survey (LFS), unadjusted data. Break in series in 2017-I due to the reform and modernization of the LFS.

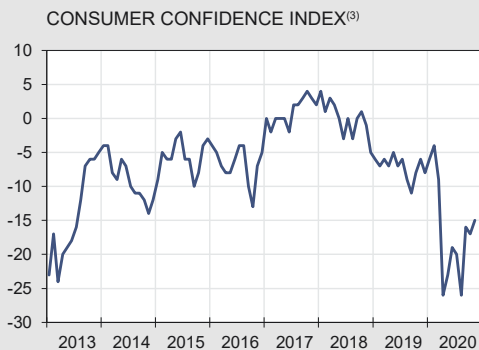
(5) Euro area = EA19.

(6) Fully unemployed persons receiving benefits, compulsorily and voluntarily registered job-seekers; gross data.

(7) This series corresponds with the results of the Labour Force Survey (LFS, group of 15-74 years), monthly adjusted by using the administrative national unemployment figures, in accordance with the Eurostat's methodology.



— Seasonally adjusted and smoothed series
 — Seasonally adjusted series



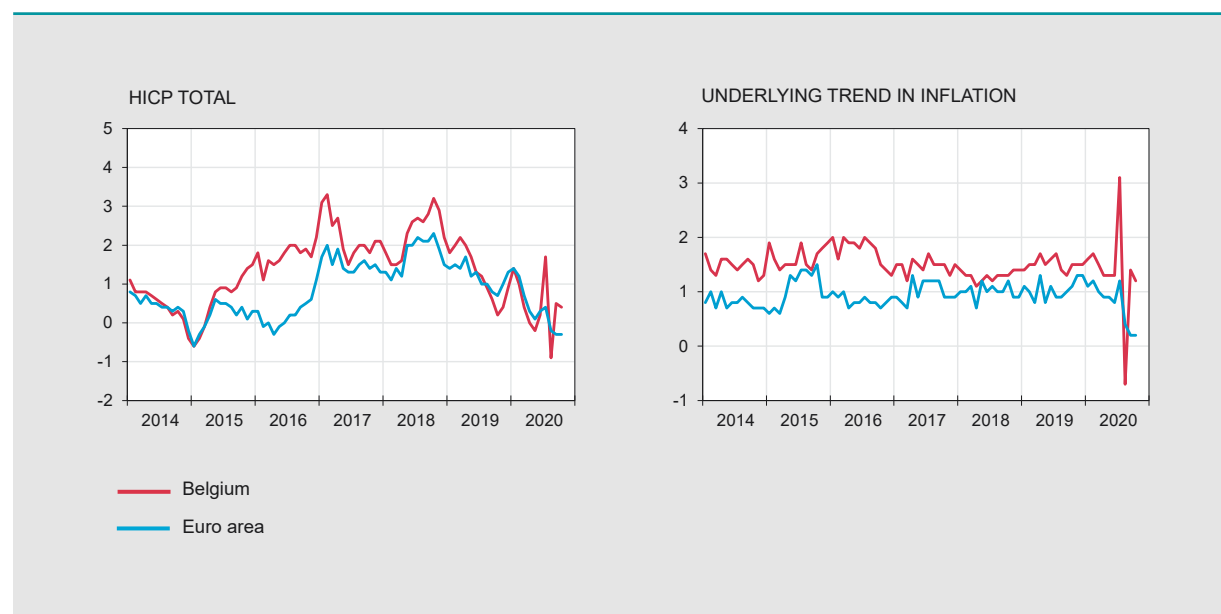
Source: NBB.

- (1) Weighted average of the synthetic curve of manufacturing industry, building industry, trade and business-related services.
- (2) Percentage of production capacity utilisation, seasonally adjusted.
- (3) Includes expectations on the general economic situation, unemployment, financial situation and saving capacity.
- (4) Over the next 12 months.

Harmonised index of consumer prices

Annual data

	2014	2015	2016	2017	2018	2019
<i>(percentage changes compared to the previous year)</i>						
BELGIUM						
Total HICP	0.5	0.6	1.8	2.2	2.3	1.2
Energy	-6.0	-8.0	-0.6	9.9	8.9	-0.8
Unprocessed food ⁽¹⁾	-1.3	2.1	2.6	-0.2	1.8	-0.4
Processed food	2.1	1.6	3.5	1.8	2.9	1.7
Underlying trend in inflation ⁽²⁾	1.5	1.6	1.8	1.5	1.3	1.5
Non-energy industrial goods	0.3	0.5	1.0	0.8	0.8	1.0
Services	2.3	2.4	2.2	1.9	1.6	1.8
<i>p.m.</i> National index of consumer prices						
General index	0.3	0.6	2.0	2.1	2.1	1.4
Health index ⁽³⁾	0.4	1.1	2.1	1.8	1.8	1.5
EURO AREA⁽⁴⁾						
Total HICP	0.4	0.2	0.2	1.5	1.8	1.2
Energy	-1.9	-6.8	-5.1	4.9	6.4	1.1
Unprocessed food ⁽¹⁾	-0.8	1.6	1.4	2.4	2.3	1.4
Processed food	1.2	0.6	0.6	1.5	2.1	1.9
Underlying trend in inflation ⁽²⁾	0.8	1.1	0.8	1.0	1.0	1.0
Non-energy industrial goods	0.1	0.3	0.4	0.3	0.3	0.3
Services	1.2	1.5	1.1	1.4	1.5	1.5



Sources: Eurostat; Statbel, SMEs, Self-employed and Energy.

(1) Fruit, vegetables, meat and fish.

(2) HICP excluding food and energy.

(3) General index excluding products which are harmful to the health (tobacco, alcohol, petrol and diesel).

(4) Euro area = EA11-2000, EA12-2006, EA13-2007, EA15-2008, EA16-2010, EA17-2013, EA18-2014, EA19.

Harmonised index of consumer prices (continued)

Monthly data [NBB.Stat](#)

	2019		2020										
	N	D	J	F	M	A	M	J	J	A	S	O	
<i>(percentage changes compared to the corresponding month of the previous year)</i>													
BELGIUM													
Total HICP	0.4	0.9	1.4	1.0	0.4	0.0	-0.2	0.2	1.7	-0.9	0.5	0.4	n.
Energy	-8.6	-3.7	-0.3	-5.6	-11.8	-16.8	-18.9	-13.1	-11.2	-10.6	-11.9	-11.0	n.
Unprocessed food ⁽¹⁾	-1.1	0.3	1.1	1.6	2.8	5.7	6.4	6.3	7.2	5.4	7.2	6.7	n.
Processed food	1.6	1.5	1.6	2.2	2.6	2.7	2.7	1.8	1.9	2.4	2.1	2.1	n.
Underlying trend in inflation ⁽²⁾	1.5	1.5	1.6	1.7	1.5	1.3	1.3	1.3	3.1	-0.7	1.4	1.2	n.
Non-energy industrial goods	0.9	1.0	0.4	1.0	1.0	1.0	0.9	0.9	5.5	-4.6	0.8	0.6	n.
Services	1.9	1.8	2.4	2.1	1.9	1.6	1.6	1.5	1.7	1.7	1.8	1.6	n.
<i>p.m.</i> National index of consumer prices													
General index	0.4	0.8	1.4	1.1	0.6	0.6	0.5	0.6	0.7	0.8	0.9	0.7	0.5
Health index ⁽³⁾	0.5	0.7	1.1	1.0	0.8	1.1	1.1	0.9	1.0	1.0	1.1	1.0	0.8
EURO AREA⁽⁴⁾													
Total HICP	1.0	1.3	1.4	1.2	0.7	0.3	0.1	0.3	0.4	-0.2	-0.3	-0.3	n.
Energy	-3.2	0.2	1.9	-0.3	-4.5	-9.7	-11.9	-9.3	-8.4	-7.8	-8.2	-8.2	n.
Unprocessed food ⁽¹⁾	1.8	2.1	2.3	2.6	3.6	7.6	6.7	6.0	3.1	2.3	3.1	4.3	n.
Processed food	2.0	2.0	2.0	2.0	2.1	2.3	2.4	2.3	1.6	1.5	1.4	1.3	n.
Underlying trend in inflation ⁽²⁾	1.3	1.3	1.1	1.2	1.0	0.9	0.9	0.8	1.2	0.4	0.2	0.2	n.
Non-energy industrial goods	0.4	0.5	0.3	0.5	0.5	0.3	0.2	0.2	1.6	-0.1	-0.3	-0.1	n.
Services	1.9	1.8	1.5	1.6	1.3	1.2	1.3	1.2	0.9	0.7	0.5	0.4	n.

Sources: Eurostat; Statbel, SMEs, Self-employed and Energy.

(1) Fruit, vegetables, meat and fish.

(2) HICP excluding food and energy.

(3) General index excluding products which are harmful to the health (tobacco, alcohol, petrol and diesel).

(4) Euro area = EA11-2000, EA12-2006, EA13-2007, EA15-2008, EA16-2010, EA17-2013, EA18-2014, EA19.

General government - EDP definition⁽¹⁾

	2015	2016	2017	2018	2019
	<i>(percentages of GDP)</i>				
REVENUE					
Fiscal and para-fiscal revenue	44.4	43.6	44.2	44.2	43.0
Direct taxes	16.3	16.0	16.6	16.8	15.7
Indirect taxes	13.2	13.4	13.3	13.4	13.4
Actual social contributions	14.1	13.5	13.4	13.3	13.3
Capital taxes	0.9	0.8	0.8	0.8	0.7
Non-fiscal and non-para-fiscal revenue ⁽²⁾	6.9	7.1	7.2	7.2	7.1
Total	51.3	50.8	51.3	51.4	50.1
PRIMARY EXPENDITURE					
Social benefits ⁽³⁾	24.7	24.7	24.6	24.5	24.6
Other expenditures	26.1	25.8	25.1	25.5	25.5
Total	50.8	50.4	49.7	50.0	50.1
PRIMARY BALANCE	0.5	0.3	1.7	1.3	0.0
INTEREST CHARGES	2.9	2.7	2.4	2.1	2.0
OVERALL BALANCE	-2.4	-2.4	-0.7	-0.8	-1.9
<i>p.m.</i> FOR THE SUBSECTORS					
Federal government	-1.3	-2.6	-1.3	-0.2	-1.9
Social security	0.2	-0.1	0.2	0.0	0.2
Communities and regions	-1.4	0.0	0.2	-0.4	-0.2
Local authorities	0.1	0.2	0.2	-0.1	0.0
INTERNATIONAL COMPARISON					
Primary balance					
Belgium	0.5	0.3	1.7	1.3	0.0
Euro area ⁽⁴⁾	0.3	0.6	1.0	1.4	1.0
EU-27	0.3	0.6	1.0	1.3	1.0
Overall balance					
Belgium	-2.4	-2.4	-0.7	-0.8	-1.9
Euro area ⁽⁴⁾	-2.0	-1.5	-0.9	-0.5	-0.6
EU-27	-1.9	-1.4	-0.8	-0.4	-0.5
Consolidated gross debt					
Belgium	105.2	105.0	102.0	99.8	98.1
Euro area ⁽⁴⁾	90.9	90.1	87.7	85.8	84.0
EU-27	84.8	84.0	81.5	79.5	77.6

Sources: NAI, NBB, Eurostat.

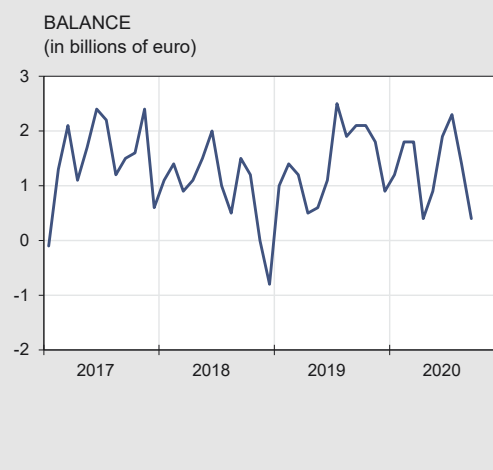
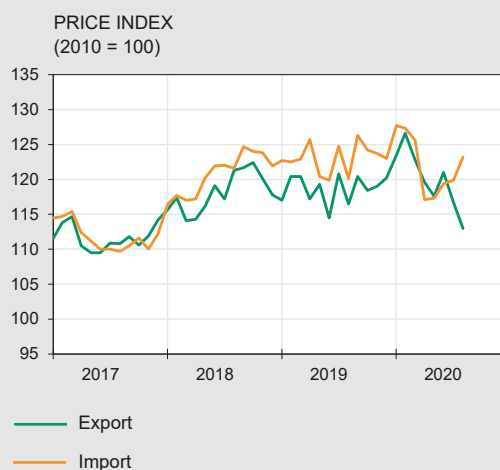
(1) Excessive Deficit Procedure (EDP), definition of the Treaty on the Functioning of the European Union.

(2) Property income, imputed social security contributions, transfers from other sectors and sales of goods and services.

(3) From social security and all other subsectors of general government.

(4) Euro area = EA19.

VALUE	2019				2020								
	S	O	N	D	J	F	M	A	M	J	J	A	S
	<i>(billions of euro)</i>												
Monthly data													
Export	33.5	35.7	32.8	30.5	34.1	33.2	32.9	24.7	25.4	29.8	29.3	26.5	30.8
Import	31.4	33.6	31.0	29.5	32.9	31.3	31.1	24.2	24.5	28.0	27.0	25.2	30.4
Balance	2.1	2.1	1.8	0.9	1.2	1.8	1.8	0.4	0.9	1.9	2.3	1.4	0.4
Cumulative data over the last 12 months													
Export	399.0	399.2	398.3	399.1	399.5	400.4	398.4	388.9	379.6	376.8	371.7	368.4	365.7
Import	386.3	385.6	382.9	382.1	382.2	382.6	380.0	370.6	361.0	357.4	352.6	349.8	348.8
Balance	12.7	13.6	15.4	17.1	17.3	17.7	18.4	18.4	18.6	19.4	19.1	18.6	16.8
	<i>(percentage changes in the last 12 months compared to the preceding 12 months)</i>												
PRICE													
Export	2.4	1.2	0.6	0.5	0.8	1.1	0.8	0.7	0.4	1.2	0.7	0.8	n.
Import	4.4	3.5	2.5	1.9	1.8	1.8	1.6	0.4	0.2	0.3	-0.2	0.1	n.
Terms of trade	-1.7	-2.0	-1.6	-1.5	-1.0	-0.8	-0.9	0.3	0.2	0.8	0.8	0.6	n.
VOLUME													
Export	-0.9	-0.4	0.0	0.1	-0.2	-0.3	-0.5	-3.5	-5.9	-6.7	-7.7	-8.3	n.
Import	-2.0	-2.1	-2.5	-2.6	-2.5	-2.6	-2.9	-5.1	-8.0	-8.6	-9.3	-9.6	n.
Coverage ratio	1.1	1.7	2.6	2.8	2.4	2.4	2.5	1.7	2.3	2.1	1.8	1.4	n.

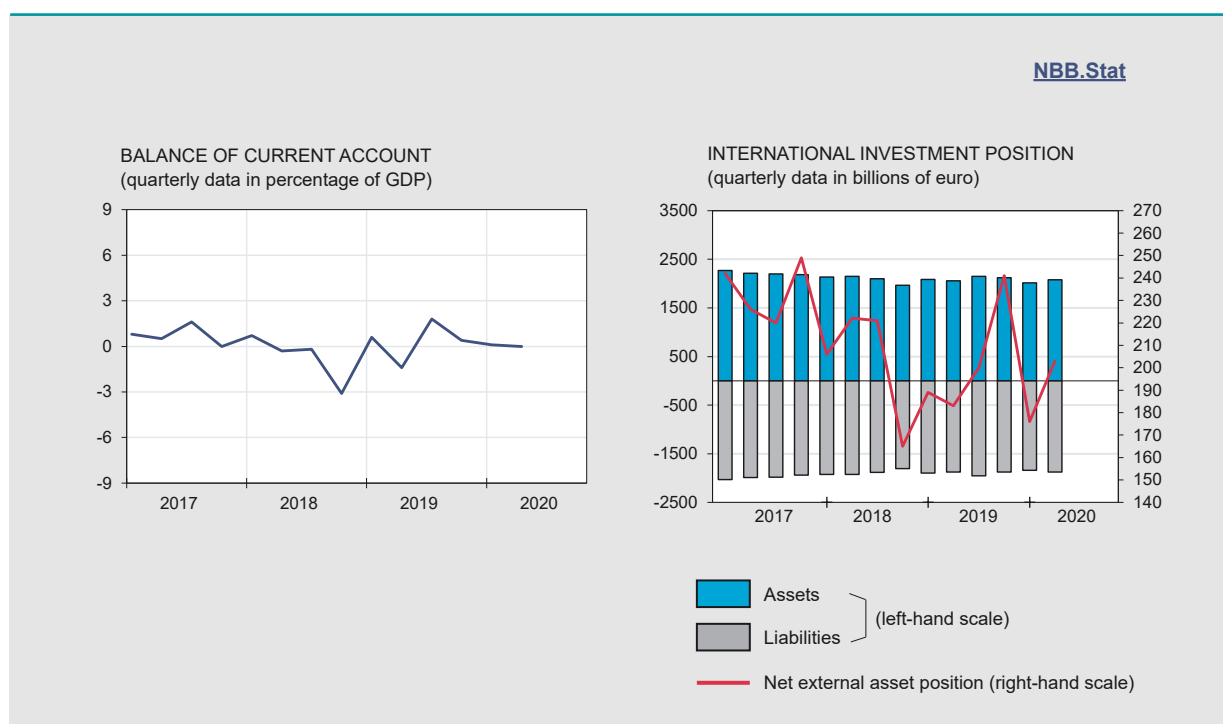


Source: NAI.

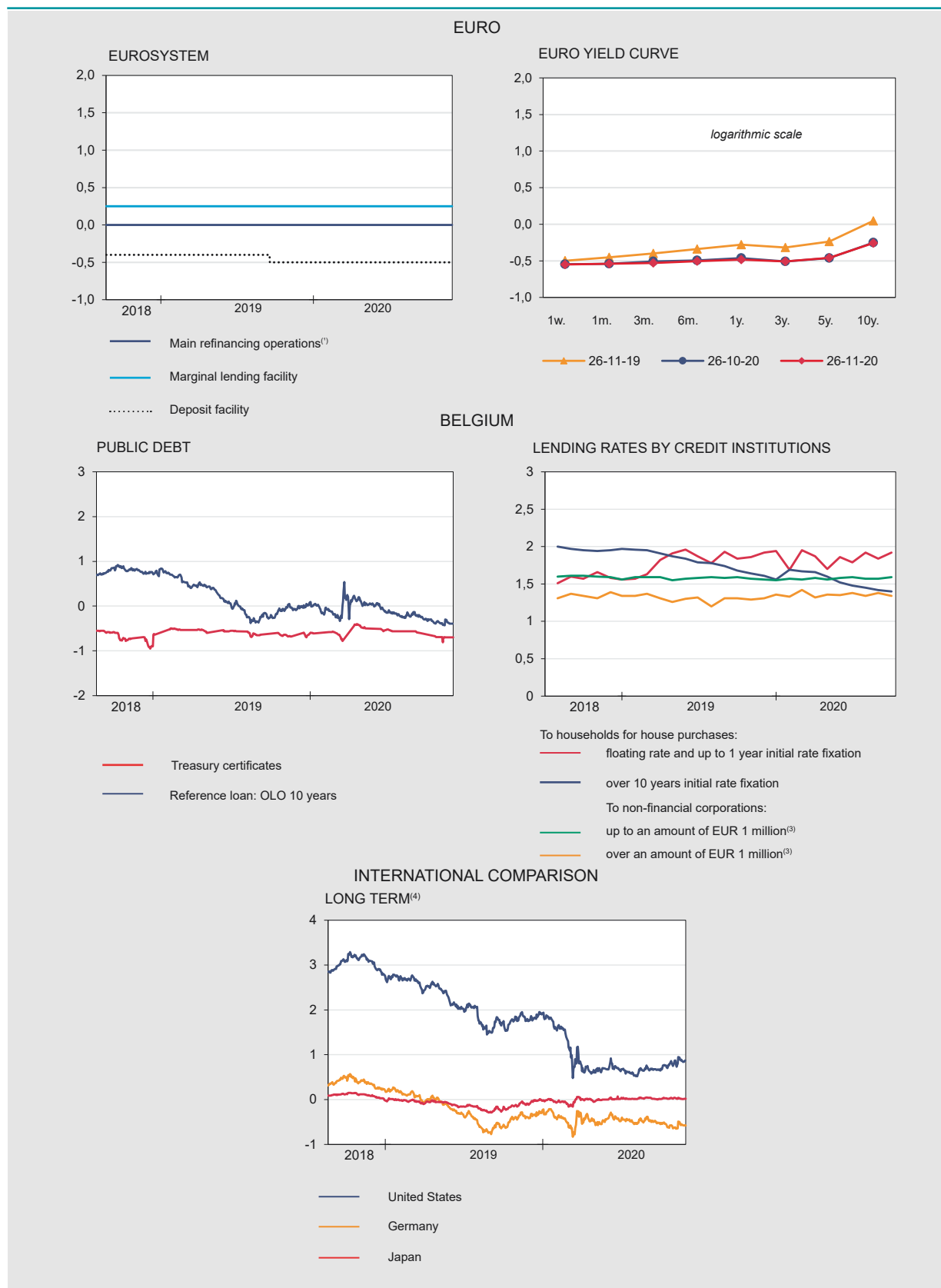
(1) From 15/01/2020 the focus on the evolution of foreign trade will be shifted to the community concept instead of the national concept. The figures on the NBB.Stat website remain fully available in national and in community concept.

Balance of payments [NBB.Stat](#)

	2019						2020						
	J	J	A	S	O	N	D	J	F	M	A	M	J
	<i>(cumulative data over the last 12 months, in billions of euro)</i>												
CURRENT ACCOUNT	-5.0	-3.6	-2.8	-2.7	-1.9	0.4	1.7	1.3	1.0	1.1	1.0	4.3	2.8
Goods	-2.1	-0.8	-0.2	-0.1	0.7	2.3	3.5	3.6	3.1	3.3	3.0	3.4	3.3
Services	-1.4	-1.3	-1.1	-1.0	-1.1	-0.5	-0.5	-0.6	-0.6	-0.2	0.1	1.4	1.3
Primary incomes	6.0	6.1	6.0	5.8	6.1	6.0	5.9	5.9	5.9	5.4	5.0	6.6	4.9
Secondary incomes	-7.6	-7.6	-7.5	-7.4	-7.5	-7.4	-7.2	-7.7	-7.3	-7.3	-7.1	-7.0	-6.7
CAPITAL ACCOUNT	0.4	0.4	0.4	0.4	0.5	0.5	0.7	0.7	0.7	0.6	0.5	0.4	0.4
FINANCIAL ACCOUNT	-6.0	-6.3	-3.3	-2.4	1.1	2.5	-1.5	-1.1	1.1	2.9	-0.4	7.0	1.0
Direct investment	10.8	11.4	6.9	4.4	-0.2	-2.6	-1.2	3.5	-6.9	-11.8	-10.8	-5.8	-15.6
Equity capital	69.6	71.6	70.5	67.4	51.8	36.6	36.2	36.8	35.9	28.2	27.1	19.4	18.2
Other capital	-58.8	-60.2	-63.6	-63.0	-52.0	-39.1	-37.3	-33.2	-42.8	-40.0	-37.9	-25.3	-33.8
Portfolio investment	-23.0	-27.9	-27.1	-18.7	-15.7	-0.9	-6.6	-19.9	-6.6	6.2	14.8	24.3	14.3
Financial derivatives	1.5	2.1	2.9	0.1	1.0	0.9	0.8	1.8	1.6	0.9	-0.5	0.3	-1.1
Other transactions	4.3	7.7	13.6	11.4	15.6	4.9	5.4	13.4	13.0	7.5	-4.0	-12.1	3.1
NBB's reserves	0.4	0.5	0.4	0.4	0.3	0.2	0.0	0.0	0.1	0.1	0.1	0.2	0.3
ERRORS AND OMISSIONS	-1.4	-3.0	-0.9	-0.2	2.5	1.5	-3.9	-3.1	-0.5	1.2	-2.0	2.2	-2.1



Sources: NBB, NAI.



Sources: ECB, NBB.

(1) Minimum bid rate.

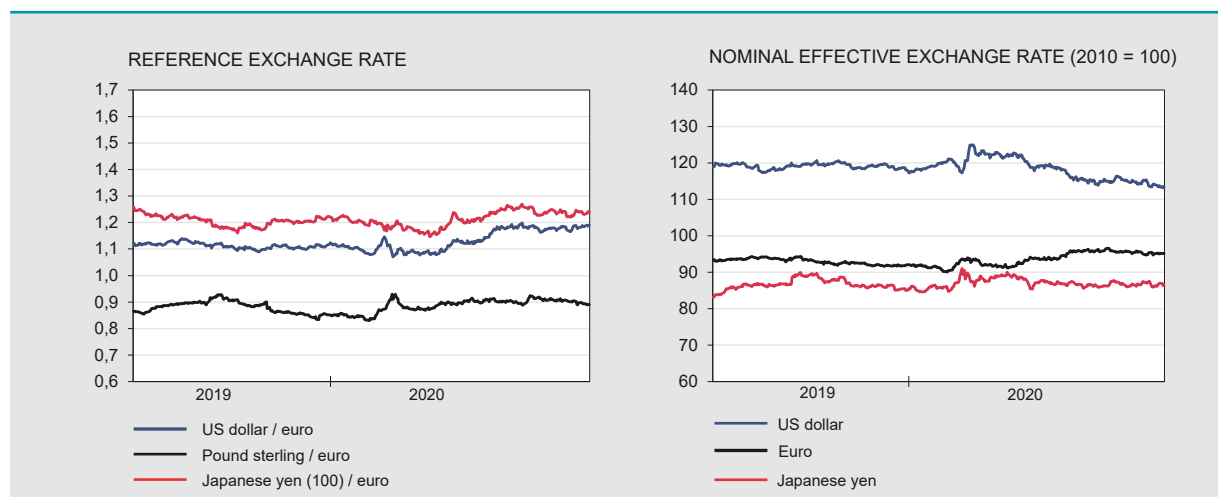
(2) Weighted average rate.

(3) Floating rate and up to 1 year initial rate fixation.

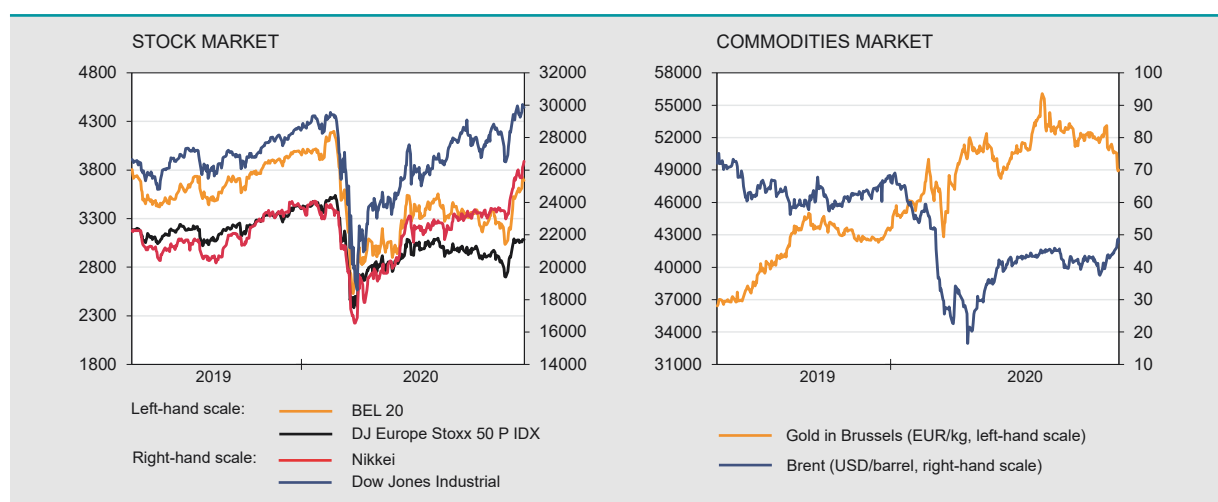
(4) Ten-year government bond.

Financial markets (continued)

Exchange rates [NBB.Stat](#)



Stock and commodities market [NBB.Stat](#)



Sources: ECB, BIS, Euronext.

Monetary aggregates⁽¹⁾ [NBB.Stat](#)

	2019				2020								
	S	O	N	D	J	F	M	A	M	J	J	A	S
<i>(end of period, in billions of euro)</i>													
EURO AREA													
M3 excluding currency in circulation	11678	11728	11827	11764	11783	11876	12203	12359	12555	12624	12706	12716	12806
M3	12883	12937	13042	12996	13007	13105	13456	13632	13849	13931	14027	14042	14136
of which: by MFI⁽²⁾ in BELGIUM													
Deposits													
overnight	227.6	230.1	232.7	229.1	230.5	230.9	240.5	248.3	251.9	254.0	251.0	250.3	252.0
with agreed maturity up to 2 years	12.9	11.9	11.9	11.0	11.3	10.2	12.1	12.8	12.7	13.6	13.7	13.2	12.0
redeemable at notice up to 3 months	325.2	325.4	325.8	327.6	328.8	329.5	328.2	329.1	333.1	334.4	334.7	335.7	334.8
Others M3 ⁽³⁾ components	24.6	22.8	21.3	21.0	21.7	25.6	30.9	32.4	31.2	32.8	30.5	29.1	28.8
M3 ⁽³⁾	590.4	590.2	591.7	588.6	592.3	596.3	611.8	622.5	629.0	634.7	629.9	628.3	627.6

Sources: NBB, ECB.

(1) M3 comprises currency in circulation, deposits with agreed maturity up to 2 years, repurchase agreements (exclude the Repurchase agreements with Central counterparties - CCPs), money market fund shares/units, money market paper and debt securities up to 2 years.

(2) Monetary Financial Institutions.

(3) Excluding currency in circulation.

	2018				2019				2020	
	I	II	III	IV	I	II	III	IV	I	II
	<i>(end of period outstanding amounts in billions of euro)</i>									
FINANCIAL ASSETS										
Individuals	1326.8	1337.7	1333.0	1313.9	1361.2	1381.0	1401.3	1409.6	1349.9	1406.1
General government	207.1	208.0	207.0	206.6	210.1	217.8	219.7	215.9	220.7	247.0
Non-financial corporations	1467.5	1466.7	1425.8	1364.7	1410.8	1392.1	1448.4	1436.8	1365.2	1382.4
FINANCIAL LIABILITIES										
Individuals	280,8	283,8	285,4	289,4	293,3	298,0	300,7	307,3	309,5	311,7
General government	592,8	591,9	591,2	590,7	611,9	626,6	646,7	618,2	652,2	694,2
Non-financial corporations	1905,1	1902,6	1862,2	1844,4	1883,7	1878,7	1913,2	1887,4	1820,3	1842,5
NET FINANCIAL WEALTH										
Individuals	1046.0	1053.9	1047.6	1024.5	1067.8	1083.0	1100.7	1102.4	1040.4	1094.4
General government	-385.8	-383.9	-384.2	-384.1	-401.8	-408.8	-426.9	-402.4	-431.5	-447.3
Non-financial corporations	-437.6	-435.9	-436.4	-479.6	-472.9	-486.6	-464.9	-450.6	-455.2	-460.1

Source: NBB.

Conventional signs

- indicates data which have been updated since the previous publication.
- 0.0 nil or less than half the smallest digit considered.
- data non-existent or meaningless.
- n. not available.
- e estimate.

Information

We suggest people wanting more information about the contents, the methodology, the methods of calculations and the sources to get in touch with the Statistical information systems of the National Bank of Belgium.

Alexander Foket tel.: +32 2 221 30 45
 Nino Di Zinno tel.: +32 2 221 21 36
 E-mail: datashop@nbb.be

Editor
 Rudi Acx
 Head of the General Statistics Department

National Bank of Belgium
 boulevard de Berlaimont 14 BE-1000 Brussels

Closing date 2020-11-27 Next issue: 2020-12-04

All rights reserved.
 Reproduction for educational and non-commercial purposes is permitted provided that the source is acknowledged.