

Economic indicators for Belgium



WEEKLY PUBLICATION

N° 2018-26 29/06/2018

Summary

	ACTUAL FIGURES*			FORECASTS**									
	2015	2016	2017	2018					2019				
				NBB	ECB	EC	OECD	BPN***	NBB	ECB	EC	OECD	BPN***
<i>(percentage changes compared to the previous year)</i>													
REAL GDP													
Belgium													
Final consumption													
private	0.9	1.7	1.3	1.4	-	1.7	1.4	-	1.6	-	1.8	1.8	-
public	0.4	0.2	1.3	0.9	-	0.2	1.2	-	0.7	-	1.0	0.9	-
Gross fixed capital formation	2.7	3.8	0.7	2.6	-	4.0	3.1	-	2.3	-	2.7	2.7	-
Exports of goods and services	3.3	7.5	4.9	4.4	-	5.0	4.7	-	4.1	-	4.4	4.3	-
Imports of goods and services	3.3	8.4	4.4	4.2	-	5.0	4.8	-	4.2	-	4.5	4.4	-
GDP	1.4	1.4	1.7	1.5	-	1.8	1.7	1.6	1.5	-	1.7	1.7	1.5
International comparison of GDP													
Euro area ⁽¹⁾	2.1	1.8	2.3	-	2.1	2.3	2.2	2.2	-	1.9	2.0	2.1	1.8
EU-28	2.3	2.0	2.4	-	-	2.3	-	-	-	-	2.0	-	-
CONSUMER PRICES													
Belgium													
<i>(percentage changes compared to the previous year)</i>													
HICP	0.6	1.8	2.2	2.1	-	1.6	1.8	1.9	1.9	-	1.6	1.8	1.7
National general index	0.6	2.0	2.1	1.9	-	-	-	-	2.0	-	-	-	-
National health index	1.1	2.1	1.8	1.6	-	-	-	-	1.9	-	-	-	-
International comparison of HICP													
Euro area ⁽¹⁾	0.0	0.2	1.5	-	1.7	1.5	1.6	1.6	-	1.7	1.6	1.8	1.5
EU-28	0.0	0.3	1.7	-	-	1.7	-	-	-	-	1.8	-	-
LABOUR COSTS IN THE PRIVATE SECTOR⁽²⁾													
Belgium													
<i>(percentage changes compared to the previous year)</i>													
Labour costs per hour worked	0.2	-0.6	1.7	2.1	-	-	-	-	2.7	-	-	-	-
Unit labour costs	-1.5	0.0	2.0	1.7	-	1.5	0.9	-	1.9	-	1.5	1.0	-
Unit labour costs													
Euro area ⁽¹⁾	0.5	0.8	0.9	-	1.5	1.4	1.4	-	-	1.2	1.0	1.4	-
EU-28	0.3	1.3	1.2	-	-	1.6	-	-	-	-	1.3	-	-

* Sources: Belgium (NAI, NBB, Statbel, EC); Euro area, EU-28 (ECB, Eurostat).

** The forecasts from the NBB are consistent with the estimates from June 2018 in the Economic Review (next update December 2018). Users should be aware that estimates of this kind can sometimes be out of date owing to changes in the information available. The older the estimates, the greater this risk becomes. Publication of the estimate therefore simply means that it is the latest estimate released by the NBB.

ECB Economic Bulletin June 2018 (next issue September 2018);

OECD May 2018 (next release November 2018);

EC European Economics Forecast Spring 2018 (next release Autumn 2018) and BPN June 2018 (next release September 2018).

*** Average of the credit institutions which participate in the «Belgian Prime News».

(1) Euro area = EA19, except the OECD forecasts.

(2) Except for the actual figures of the Euro area and the EU-28 and the EC and OECD forecasts which pertain to the whole economy.

Summary (continued)

	ACTUAL FIGURES*			FORECASTS**										
	2015	2016	2017	2018					2019					
				NBB	ECB	EC	OECD	BPN***	NBB	ECB	EC	OECD	BPN***	
LABOUR MARKET														
<i>(annual changes in percentages)</i>														
Belgium														
Total employment	0.9	1.2	1.4	0.9	-	1.2	1.1	0.9	0.6	-	1.0	1.0	0.8	
Unemployment	-3.2	-4.4	-5.0	-5.0	-	-9.4	-9.3	-	-1.1	-	-5.7	-3.9	-	
<i>(annual changes in thousands)</i>														
Total employment	39.8	57.7	65.3	41.4	-	58.3	50.5	-	29.9	-	49.3	46.1	-	
Unemployment	-19.2	-25.6	-27.5	-26.3	-	-33.4	-34.3	-	-5.5	-	-18.3	-13.0	-	
<i>(annual averages in percentages of labour force)</i>														
Harmonised unemployment rate ⁽¹⁾	8.5	7.8	7.1	6.7	-	6.4	6.4	6.5	-6.7	-	6.0	6.1	6.4	
International comparison of harmonised unemployment rate ⁽¹⁾														
Euro area ⁽²⁾	10.9	10.0	9.1	-	8.4	8.4	8.3	8.3	-	7.8	7.9	7.8	7.9	
EU-28	9.4	8.6	7.6	-	-	7.1	-	-	-	-	6.7	-	-	
GENERAL GOVERNMENT														
<i>(percentages of GDP)</i>														
Belgium														
Primary balance	0.5	0.4	1.4	1.3	-	1.2	-	-	0.3	-	0.8	-	-	
Overall balance	-2.5	-2.5	-1.0	-1.0	-	-1.1	-1.3	-1.2	-1.8	-	-1.3	-1.4	-1.4	
Consolidated gross debt	106.1	106.0	103.4	102.3	-	101.5	101.6	101.8	101.8	-	100.2	100.1	100.5	
International comparison of overall balance														
Euro area ⁽²⁾	-2.0	-1.5	-0.9	-	-0.7	-0.7	-0.6	-0.9	-	-0.8	-0.6	-0.4	-0.9	
EU-28	-2.3	-1.6	-1.0	-	-	-0.8	-	-	-	-	-0.8	-	-	
CURRENT ACCOUNT														
<i>(percentages of GDP)</i>														
Belgium														
	-0.1	0.1	-0.2	-0.3	-	0.5	-0.8	-0.3	-0.7	-	0.6	-0.8	-0.4	
International comparison														
Euro area ⁽²⁾	3.2	3.6	3.5	-	2.9	3.4	4.0	3.3	-	2.5	3.4	3.9	3.1	
EU-28	1.1	1.6	1.4	-	-	2.2	-	-	-	-	2.2	-	-	

* Sources: Belgium (NAI, NBB, Statbel, EC); Euro area, EU-28 (ECB, Eurostat).

** The forecasts from the NBB are consistent with the estimates from June 2018 in the Economic Revue (next update December 2018). Users should be aware that estimates of this kind can sometimes be out of date owing to changes in the information available. The older the estimates, the greater this risk becomes. Publication of the estimate therefore simply means that it is the latest estimate released by the NBB.

ECB Economic Bulletin June 2018 (next issue September 2018);

OECD May 2018 (next release November 2018);

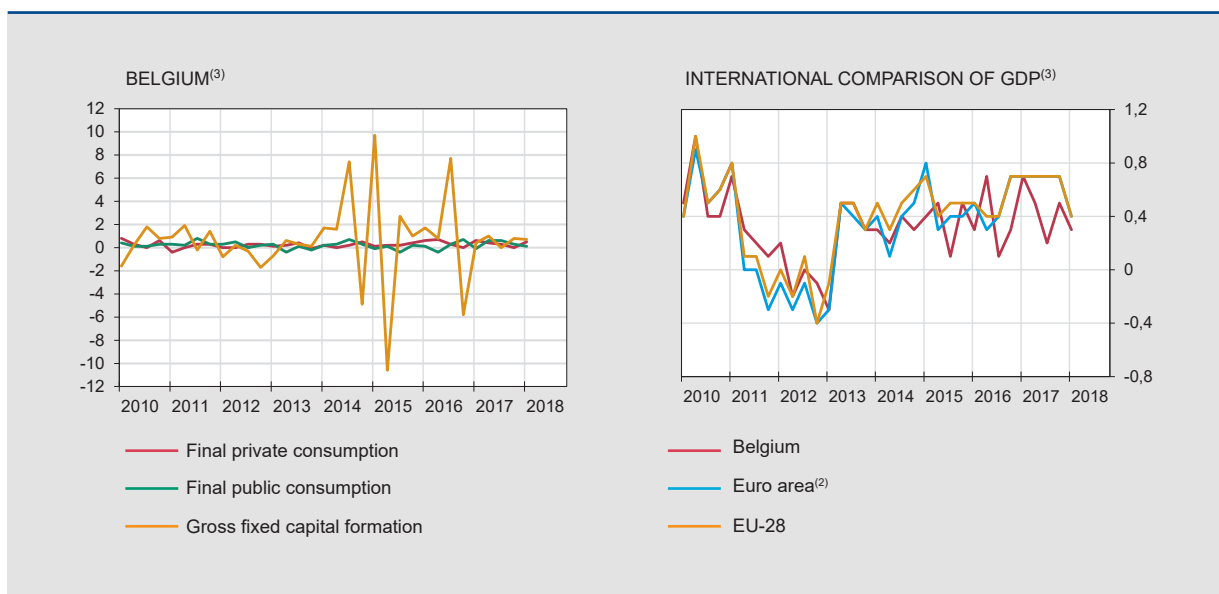
EC European Economics Forecast Spring 2018 (next release Autumn 2018) and BPN June 2018 (next release September 2018).

*** Average of the credit institutions which participate in the «Belgian Prime News».

(1) This series corresponds with the results of the Labour Force Survey (LFS, Population older than 15 years), monthly adjusted by using the administrative national unemployment figures, in accordance with the Eurostat's methodology.

(2) Euro area = EA19, except the OECD forecasts.

	2016				2017				2018
	I	II	III	IV	I	II	III	IV	I
GDP ⁽¹⁾									
Belgium									
(millions of euro)									
GDP in chained 2015 euros	103345	104090	104191	104458	105209	105710	105891	106472	106816
(percentage changes)									
vs the previous quarter	0.3	0.7	0.1	0.3	0.7	0.5	0.2	0.5	0.3
vs the corresponding quarter of the previous year	1.3	1.5	1.5	1.3	1.8	1.6	1.6	1.9	1.5
International comparison									
(percentage changes)									
vs the previous quarter									
Euro area ⁽²⁾	0.5	0.3	0.4	0.7	0.7	0.7	0.7	0.7	0.4
EU-28	0.5	0.4	0.4	0.7	0.7	0.7	0.7	0.7	0.4
vs the corresponding quarter of the previous year									
Euro area ⁽²⁾	1.7	1.7	1.7	2.0	2.1	2.5	2.8	2.8	2.5
EU-28	1.9	1.9	1.9	2.1	2.3	2.5	2.8	2.7	2.4
MAIN COMPONENTS OF EXPENDITURE ⁽¹⁾									
(percentage changes compared to the corresponding quarter of the previous year)									
Final private consumption	1.4	1.8	1.9	1.5	1.5	1.2	1.2	1.3	1.3
Final public consumption	0.1	-0.4	0.3	0.8	0.6	1.5	1.9	1.4	1.6
Gross fixed capital formation	-5.7	6.3	11.5	4.0	2.7	2.9	-4.5	2.2	2.5
business	-8.0	7.9	16.0	5.5	3.3	4.2	-6.7	2.8	2.8
housing	0.0	4.5	4.5	1.3	2.3	-0.5	-0.2	-0.4	-0.6
public	-1.2	-0.4	-3.3	-0.9	-1.0	1.5	3.2	4.4	7.2
Exports of goods and services	3.9	7.6	9.6	8.9	10.4	4.1	2.7	2.7	2.9
Imports of goods and services	1.5	9.1	12.8	10.2	11.1	4.2	0.8	2.1	2.5
GDP	1.3	1.5	1.5	1.3	1.8	1.6	1.6	1.9	1.5
MAIN COMPONENTS OF VALUE ADDED ⁽¹⁾									
Industry	1.4	1.5	0.5	-0.1	0.0	-0.4	-0.2	0.1	-0.4
Construction	2.2	0.5	-0.5	-0.7	0.9	1.0	1.0	2.1	0.7
Services	0.9	1.3	1.7	1.6	2.2	2.1	2.1	2.3	1.9
GDP	1.3	1.5	1.5	1.3	1.8	1.6	1.6	1.9	1.5



Sources: Belgium (NAI); Euro area, EU-28 (Eurostat).

(1) Adjusted for seasonal and calendar effects.

(2) Euro area = EA19.

(3) Percentage changes versus previous quarter.

Activity and labour market indicators

Activity

NBB.Stat

	2017								2018				
	M	J	J	A	S	O	N	D	J	F	M	A	M
	<i>(percentage changes in the average for the last 3 months compared to the corresponding period of the previous year)</i>												
Industrial production, excluding building	3.1	1.9	4.8	3.6	3.5	4.3	5.1	1.9	1.5	-1.0	1.4	2.0	n.
New car registrations including mixed cars	2.0	-1.0	3.3	-0.8	-1.5	-2.0	0.5	-3.4	-0.2	-1.4	0.5	-0.5	2.7
	2015		2016				2017				2018		
	IV	I	II	III	IV	I	II	III	IV	I			
	<i>(percentage changes compared to the corresponding period of the previous year)</i>												
Total turnover ⁽¹⁾	1.4	-0.2	-1.5	-1.1	2.0	8.2	6.9	5.7	4.9	2.0			
Investments ⁽¹⁾	0.6	11.0	10.1	-1.2	9.0	3.8	5.5	4.1	2.9	2.7			

Labour market

EMPLOYMENT NBB.Stat

	2015		2016				2017				2018
	IV	I	II	III	IV	I	II	III	IV	I	
Belgium	<i>(in thousands)</i>										
Domestic employment ⁽²⁾	4619.4	4629.6	4648.5	4670.6	4683.6	4700.0	4721.1	4732.5	4739.8	4749.9	
	<i>(percentages of the population of working age)</i>										
Employment rate ⁽³⁾ 15-64 years	61.8	61.6	62.0	62.2	63.4	62.2	62.8	63.4	64.1	63.9	
20-64 years	67.2	66.9	67.3	67.5	69.0	67.7	68.2	68.5	69.6	69.3	
International comparison of the employment rate ⁽³⁾											
Euro area ⁽⁴⁾ 15-64 years	64.8	64.6	65.4	65.9	65.8	65.4	66.3	66.8	66.8	66.5	
20-64 years	69.3	69.1	69.9	70.3	70.2	69.9	70.9	71.3	71.3	71.0	
EU-28 15-64 years	66.0	65.7	66.6	67.1	66.9	66.7	67.7	68.2	68.1	67.8	
20-64 years	70.4	70.2	71.1	71.5	71.4	71.2	72.3	72.6	72.5	72.3	

UNEMPLOYMENT NBB.Stat

	2017								2018				
	M	J	J	A	S	O	N	D	J	F	M	A	M
Belgium	<i>(in thousands, end of period)</i>												
Unemployment ⁽⁵⁾	504	502	545	551	532	521	505	505	513	506	492	480	464
< 25 years old	82	81	100	107	107	101	93	90	92	89	84	80	74
≥ 25 years old	422	422	445	444	425	420	412	415	422	417	408	401	390
	<i>(percentages of the labour force)</i>												
Harmonised unemployment rate ⁽⁶⁾	7.3	7.2	7.2	7.1	6.8	6.6	6.3	6.2	6.3	6.3	6.3	6.3	n.
International comparison of harmonised unemployment rate ⁽⁶⁾													
Euro area ⁽⁴⁾	9.2	9.0	9.0	8.9	8.8	8.7	8.7	8.7	8.7	8.6	8.6	8.5	n.
EU-28	7.7	7.6	7.6	7.5	7.5	7.4	7.3	7.3	7.2	7.1	7.1	7.1	n.

Sources: NBB; Statbel, SMEs, Self-employed and Energy; NEO; FEBIAC; Eurostat; NAI.

(1) Based on VAT-declaration.

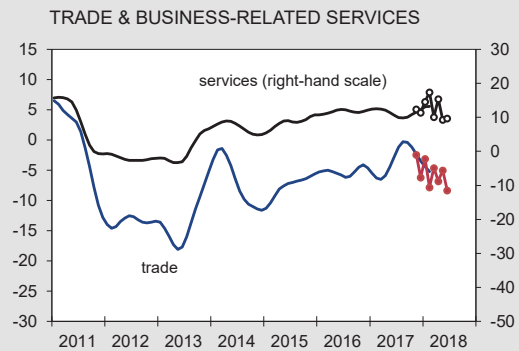
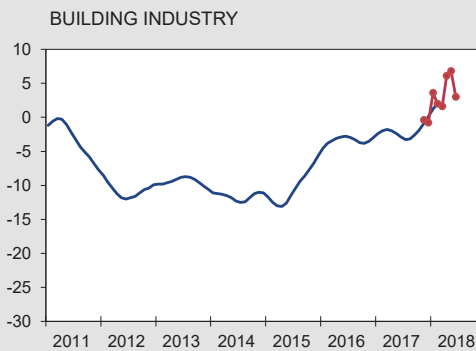
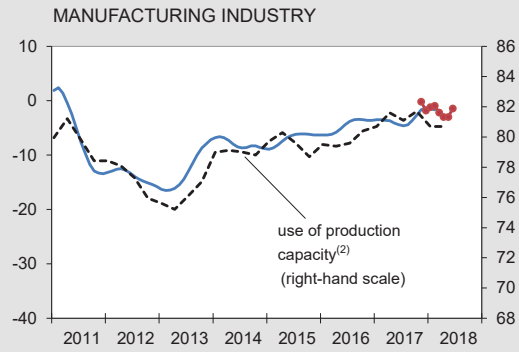
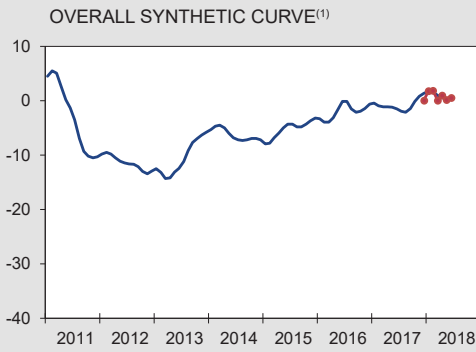
(2) Quarterly average of the number of employees and self-employed persons, seasonally adjusted.

(3) Harmonised data from the quarterly labour force survey (LFS), unadjusted data. Break in series in 2017-I due to the reform and modernization of the LFS.

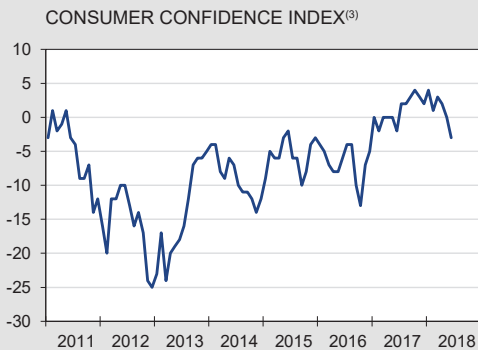
(4) Euro area = EA19.

(5) Fully unemployed persons receiving benefits, compulsorily and voluntarily registered job-seekers; gross data.

(6) This series corresponds with the results of the Labour Force Survey (LFS, group of 15-74 years), monthly adjusted by using the administrative national unemployment figures, in accordance with the Eurostat's methodology.



— Seasonally adjusted and smoothed series
 ● Seasonally adjusted series



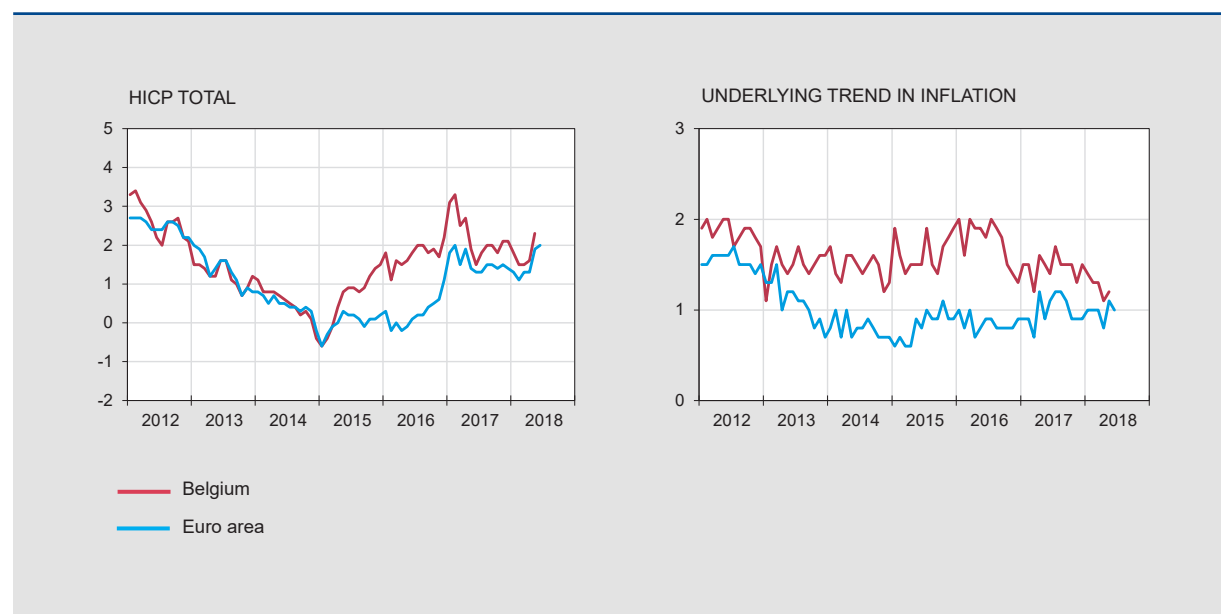
Source: NBB.

- (1) Weighted average of the synthetic curve of manufacturing industry, building industry, trade and business-related services.
- (2) Percentage of production capacity utilisation, seasonally adjusted.
- (3) Includes expectations on the general economic situation, unemployment, financial situation and saving capacity.
- (4) Over the next 12 months.

Harmonised index of consumer prices

Annual data

	2012	2013	2014	2015	2016	2017
<i>(percentage changes compared to the previous year)</i>						
BELGIUM						
Total HICP	2.6	1.2	0.5	0.6	1.8	2.2
Energy	6.0	-4.6	-6.0	-8.0	-0.6	9.8
Unprocessed food ⁽¹⁾	3.4	4.4	-1.3	2.1	2.6	0.1
Processed food	3.1	3.2	2.1	1.6	3.5	2.1
Underlying trend in inflation ⁽²⁾	1.9	1.5	1.5	1.6	1.8	1.5
Non-energy industrial goods	0.9	1.0	0.3	0.5	1.0	0.8
Services	2.5	1.9	2.3	2.4	2.2	1.9
<i>p.m.</i> National index of consumer prices						
General index	2.8	1.1	0.3	0.6	2.0	2.1
Health index ⁽³⁾	2.7	1.2	0.4	1.1	2.1	1.8
EURO AREA⁽⁴⁾						
Total HICP	2.5	1.3	0.4	0.0	0.2	1.5
Energy	7.6	0.6	-1.9	-6.8	-5.1	4.9
Unprocessed food ⁽¹⁾	3.0	3.5	-0.8	1.6	1.4	2.2
Processed food	3.1	2.2	1.2	0.6	0.6	1.6
Underlying trend in inflation ⁽²⁾	1.5	1.1	0.8	0.8	0.9	1.0
Non-energy industrial goods	1.2	0.6	0.1	0.3	0.4	0.4
Services	1.8	1.4	1.2	1.2	1.1	1.4



Sources: Eurostat; Statbel, SMEs, Self-employed and Energy.

(1) Fruit, vegetables, meat and fish.

(2) HICP excluding food and energy.

(3) General index excluding products which are harmful to the health (tobacco, alcohol, petrol and diesel).

(4) Euro area = EA11-2000, EA12-2006, EA13-2007, EA15-2008, EA16-2010, EA17-2013, EA18-2014, EA19.

Harmonised index of consumer prices (continued)

Monthly data [NBB.Stat](#)

	2017							2018							
	J	J	A	S	O	N	D	J	F	M	A	M	J		
<i>(percentage changes compared to the corresponding month of the previous year)</i>															
BELGIUM															
Total HICP	1.5	1.8	2.0	2.0	1.8	2.1	2.1	1.8	1.5	1.5	1.6	2.3	n.		
Energy	4.2	3.8	7.1	6.4	5.6	9.2	5.6	2.6	1.6	1.0	3.5	8.2	n.		
Unprocessed food ⁽¹⁾	-1.3	-0.7	-0.2	-0.5	-0.3	-0.1	0.8	0.7	-0.2	0.3	0.6	2.2	n.		
Processed food	1.8	2.2	2.5	2.8	2.1	2.6	3.2	3.5	3.5	3.7	3.6	3.5	n.		
Underlying trend in inflation ⁽²⁾	1.4	1.7	1.5	1.5	1.5	1.3	1.5	1.4	1.3	1.3	1.1	1.2	n.		
Non-energy industrial goods	0.7	1.2	0.8	0.8	0.6	0.7	0.9	1.3	0.8	0.8	0.6	0.7	n.		
Services	1.8	2.1	1.9	1.9	2.1	1.7	1.9	1.5	1.5	1.6	1.3	1.6	n.		
<i>p.m.</i> National index of consumer prices															
General index	1.6	1.8	1.9	2.0	2.0	2.1	2.1	1.7	1.5	1.4	1.5	1.8	2.1		
Health index ⁽³⁾	1.5	1.6	1.6	1.8	1.9	1.8	2.0	1.6	1.4	1.3	1.4	1.5	1.6		
EURO AREA⁽⁴⁾															
Total HICP	1.3	1.3	1.5	1.5	1.4	1.5	1.4	1.3	1.1	1.3	1.3	1.9	2.0 ⁽⁵⁾		
Energy	1.9	2.2	4.0	3.9	3.0	4.7	2.9	2.2	2.1	2.0	2.6	6.1	8.0 ⁽⁵⁾		
Unprocessed food ⁽¹⁾	1.0	0.6	0.6	1.5	2.8	2.4	1.9	1.1	-0.9	0.8	1.5	2.4	3.0 ⁽⁵⁾		
Processed food	1.6	1.9	2.0	2.0	2.1	2.1	2.2	2.5	2.3	2.9	3.0	2.6	2.7 ⁽⁵⁾		
Underlying trend in inflation ⁽²⁾	1.1	1.2	1.2	1.1	0.9	0.9	0.9	1.0	1.0	1.0	0.8	1.1	1.0 ⁽⁵⁾		
Non-energy industrial goods	0.4	0.5	0.5	0.5	0.4	0.4	0.5	0.6	0.6	0.2	0.3	0.3	0.4 ⁽⁵⁾		
Services	1.6	1.6	1.6	1.5	1.2	1.2	1.2	1.2	1.3	1.5	1.0	1.6	1.3 ⁽⁵⁾		

Sources: Eurostat; Statbel, SMEs, Self-employed and Energy.

(1) Fruit, vegetables, meat and fish.

(2) HICP excluding food and energy.

(3) General index excluding products which are harmful to the health (tobacco, alcohol, petrol and diesel).

(4) Euro area = EA11-2000, EA12-2006, EA13-2007, EA15-2008, EA16-2010, EA17-2013, EA18-2014, EA19.

(5) Flash estimate.

General government - EDP definition⁽¹⁾

	2013	2014	2015	2016	2017
	<i>(percentages of GDP)</i>				
REVENUE					
Fiscal and parafiscal revenue	45.2	45.1	44.7	43.9	44.4
Direct taxes	16.7	16.8	16.6	16.3	16.9
Indirect taxes	13.1	13.0	12.9	13.1	13.1
Actual social contributions	14.4	14.3	14.3	13.7	13.6
Capital taxes	1.0	1.0	0.9	0.8	0.8
Non-fiscal and non-parafiscal revenue ⁽²⁾	7.5	7.1	6.7	6.9	6.9
Total	52.7	52.2	51.4	50.8	51.3
PRIMARY EXPENDITURE					
Social benefits ⁽³⁾	25.3	25.3	25.2	25.2	25.2
Other expenditures	27.2	26.7	25.6	25.2	24.7
Total	52.5	52.0	50.8	50.4	49.9
PRIMARY BALANCE	0.2	0.2	0.5	0.4	1.4
INTEREST CHARGES	3.3	3.3	3.0	2.9	2.5
OVERALL BALANCE	-3.1	-3.1	-2.5	-2.5	-1.0
<i>p.m.</i> FOR THE SUBSECTORS					
Federal government	-2.6	-2.5	-1.3	-2.6	-1.3
Social security	-0.1	0.0	0.1	-0.1	0.1
Communities and regions	-0.2	-0.4	-1.4	0.0	0.1
Local authorities	-0.3	-0.2	0.1	0.2	0.1
INTERNATIONAL COMPARISON					
Primary balance					
Belgium	0.2	0.2	0.5	0.4	1.4
Euro area ⁽⁴⁾	-0.2	0.1	0.3	0.6	1.1
EU-28	-0.6	-0.4	-0.1	0.5	1.0
Overall balance					
Belgium	-3.1	-3.1	-2.5	-2.5	-1.0
Euro area ⁽⁴⁾	-3.0	-2.5	-2.0	-1.5	-0.9
EU-28	-3.3	-2.9	-2.3	-1.6	-1.0
Consolidated gross debt					
Belgium	105.5	107.0	106.1	106.0	103.4
Euro area ⁽⁴⁾	91.6	91.9	89.9	89.0	86.7
EU-28	85.8	86.5	84.5	83.3	81.6

Sources: NAI, NBB, Eurostat.

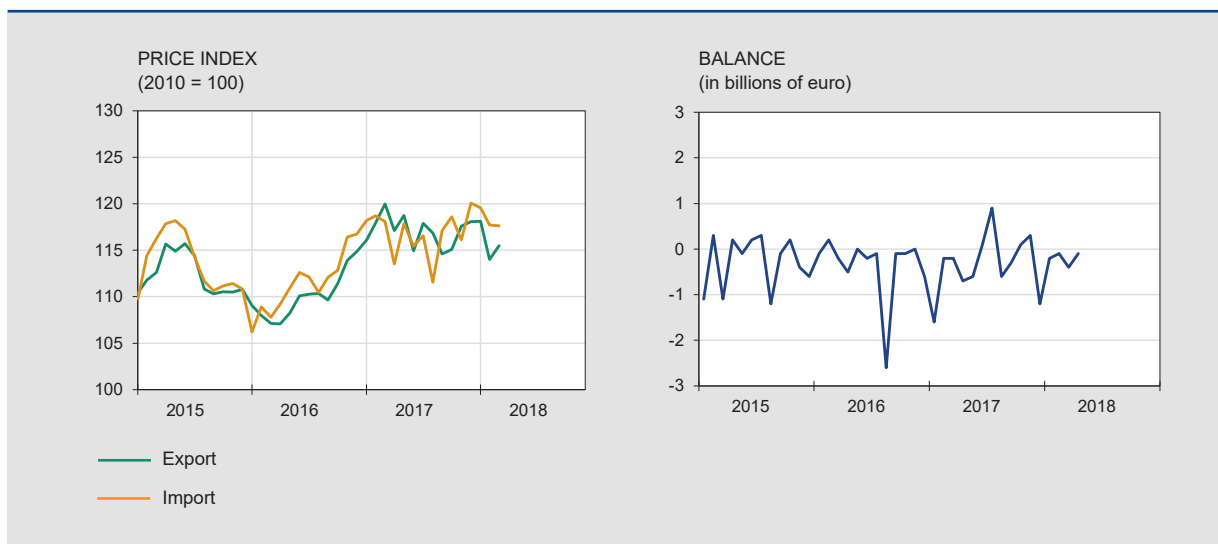
(1) Excessive Deficit Procedure (EDP), definition of the Treaty on the Functioning of the European Union.

(2) Property income, imputed social security contributions, transfers from other sectors and sales of goods and services.

(3) From social security and all other subsectors of general government.

(4) Euro area = EA19.

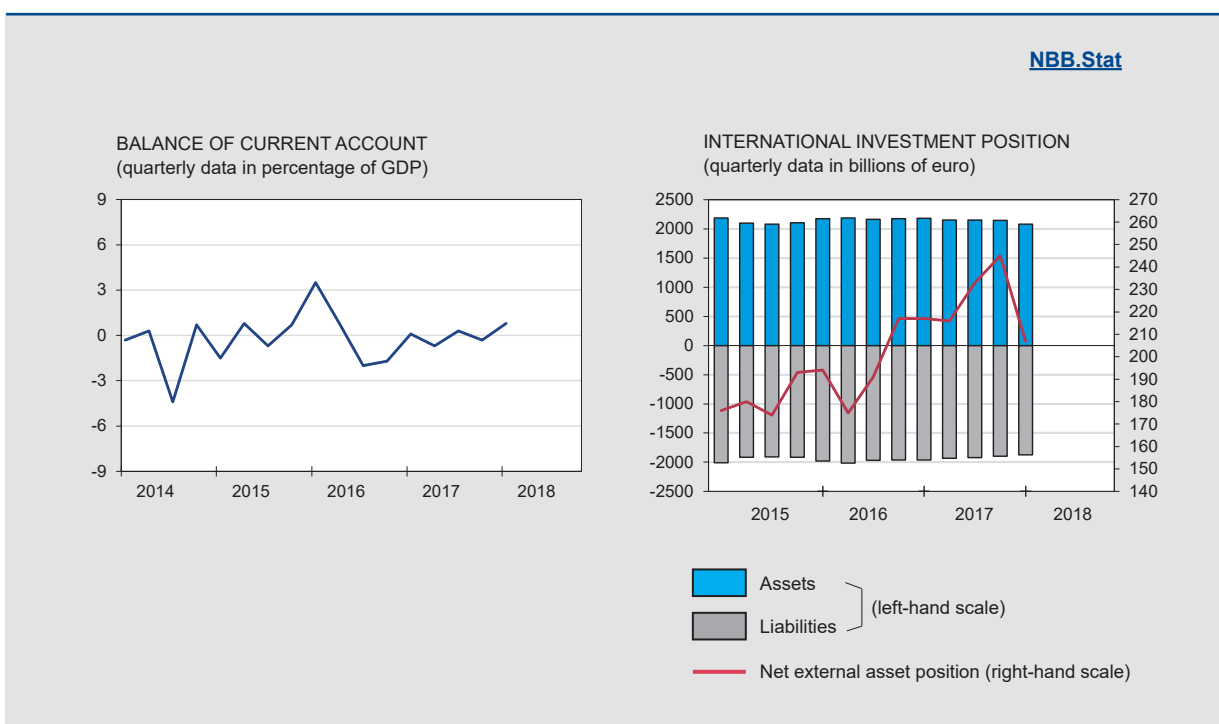
VALUE	2017									2018			
	A	M	J	J	A	S	O	N	D	J	F	M	A
	<i>(billions of euro)</i>												
Monthly data													
Export	21.0	23.8	23.6	21.3	20.5	22.0	23.3	23.8	21.2	24.5	23.5	25.6	22.1
Import	21.7	24.4	23.5	20.4	21.1	22.3	23.2	23.5	22.4	24.7	23.6	26.0	22.2
Balance	-0.7	-0.6	0.1	0.9	-0.6	-0.3	0.1	0.3	-1.2	-0.2	-0.1	-0.4	-0.1
Cumulative data over the last 12 months													
Export	260.3	263.3	264.4	265.7	266.8	266.8	268.6	269.6	269.8	273.1	274.4	274.1	275.2
Import	266.8	270.4	271.2	271.5	270.5	270.7	272.4	273.2	273.9	275.8	277.0	276.9	277.3
Balance	-6.5	-7.2	-6.8	-5.8	-3.7	-4.0	-3.9	-3.6	-4.1	-2.7	-2.6	-2.8	-2.1
	<i>(percentage changes in the last 12 months compared to the preceding 12 months)</i>												
PRICE													
Export	2.3	3.6	4.4	5.3	5.9	6.3	6.5	6.5	6.4	6.0	4.9	3.6	n.
Import	2.6	3.7	4.3	4.8	5.0	5.2	5.5	5.1	4.9	4.1	3.3	2.4	n.
Terms of trade	-0.3	-0.1	0.1	0.5	0.8	1.0	0.9	1.3	1.5	1.9	1.7	1.2	n.
VOLUME													
Export	7.9	7.0	6.2	5.9	4.6	3.3	3.5	2.3	1.4	1.9	2.6	1.9	n.
Import	9.2	8.9	8.0	7.5	5.1	4.0	3.9	3.3	2.7	2.2	2.3	0.9	n.
Coverage ratio	-1.2	-1.7	-1.7	-1.5	-0.5	-0.7	-0.4	-1.0	-1.3	-0.3	0.3	1.0	n.



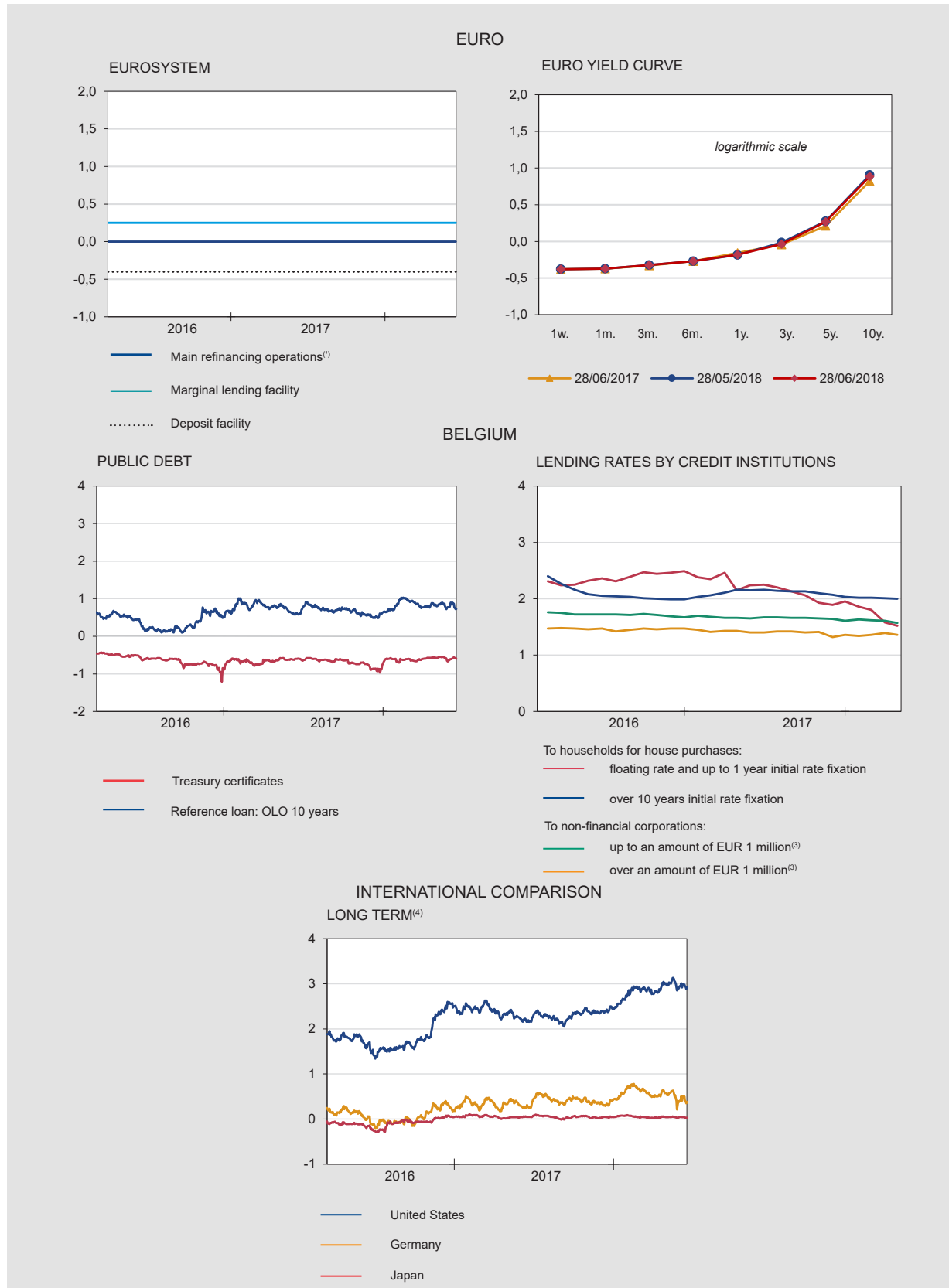
Source: NAI.
(1) National concept.

Balance of payments [NBB.Stat](#)

	2017										2018		
	M	A	M	J	J	A	S	O	N	D	J	F	M
	<i>(cumulative data over the last 12 months, in billions of euro)</i>												
CURRENT ACCOUNT	-3.1	-3.0	-5.0	-4.7	-4.4	-1.6	-2.3	-1.9	-1.8	-0.7	0.8	0.2	0.1
Goods	-1.6	-1.9	-2.4	-2.0	-1.2	1.0	0.8	0.8	0.8	0.2	1.5	1.7	1.7
Services	2.8	3.0	2.6	2.0	1.6	1.1	0.4	0.5	0.6	2.0	2.5	2.0	2.4
Primary incomes	2.7	2.8	1.9	2.3	2.3	3.3	3.5	3.7	3.5	3.7	3.6	3.8	3.5
Secondary incomes	-7.1	-7.1	-7.1	-7.1	-7.1	-7.0	-7.0	-6.9	-6.8	-6.6	-6.9	-7.2	-7.5
CAPITAL ACCOUNT	0.4	0.4	0.4	0.5	0.5	0.6	0.8	0.8	0.4	0.4	0.4	0.4	0.3
FINANCIAL ACCOUNT	-2.4	-2.2	-2.9	-4.5	-0.6	-2.1	0.4	-1.6	-1.5	-0.2	1.1	2.6	0.7
Direct investment	19.8	28.1	28.3	32.2	42.4	39.7	37.6	11.8	1.4	17.9	18.2	21.4	28.5
Equity capital	46.7	44.0	49.2	58.9	57.1	66.0	65.7	38.3	44.8	25.8	26.3	27.7	23.9
Other capital	-26.9	-15.9	-21.0	-26.7	-14.7	-26.3	-28.2	-26.6	-43.4	-7.9	-8.1	-6.3	4.6
Portfolio investment	-23.0	-22.0	-21.3	-16.7	-29.5	-31.1	-22.1	-9.6	-5.8	14.0	18.9	24.4	11.3
Financial derivatives	-1.0	-0.6	-1.6	-2.0	-1.3	-0.8	-1.4	-1.5	-2.9	0.6	1.0	1.5	1.6
Other transactions	1.7	-7.7	-8.6	-18.5	-12.7	-10.5	-14.3	-3.2	4.7	-33.8	-38.4	-45.8	-41.8
NBB's reserves	0.2	0.1	0.3	0.4	0.4	0.7	0.6	0.9	1.0	1.1	1.2	1.1	1.1
ERRORS AND OMISSIONS	0.3	0.5	1.7	-0.3	3.2	-1.0	1.8	-0.5	-0.1	0.1	0.0	2.0	0.2



Sources: NBB, NAI.



Sources: ECB, NBB.

(1) Minimum bid rate.

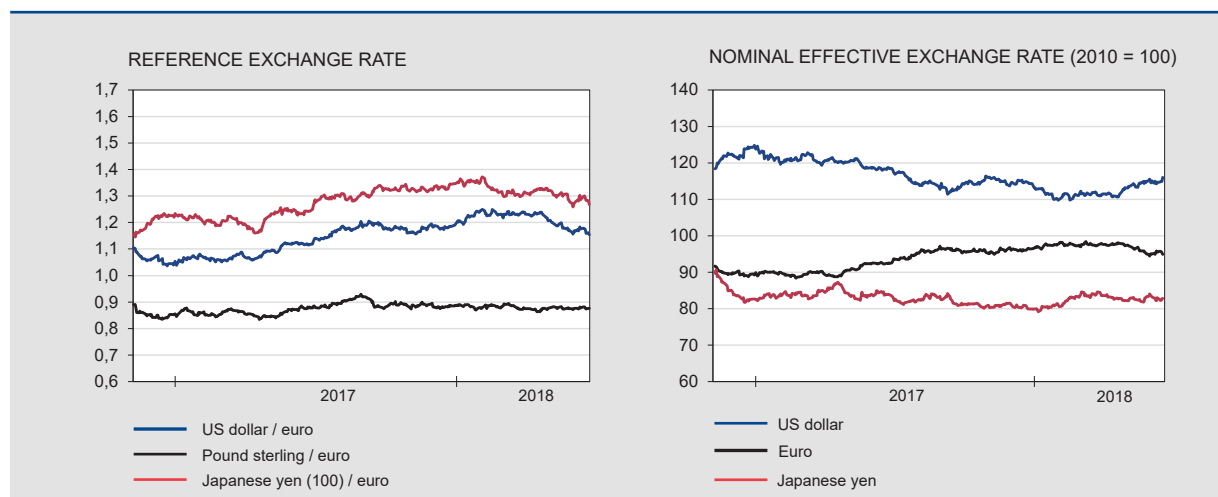
(2) Weighted average rate.

(3) Floating rate and up to 1 year initial rate fixation.

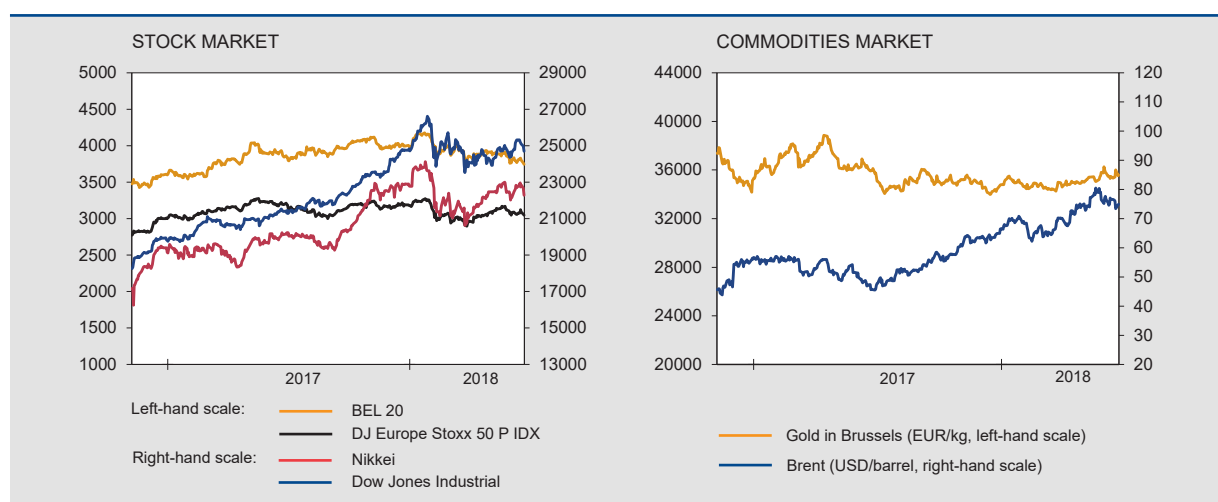
(4) Ten-year government bond.

Financial markets (continued)

Exchange rates [NBB.Stat](#)



Stock and commodities market [NBB.Stat](#)



Sources: ECB, BIS, Euronext.

Monetary aggregates⁽¹⁾ [NBB.Stat](#)

	2017								2018				
	M	J	J	A	S	O	N	D	J	F	M	A	M
<i>(end of period, in billions of euro)</i>													
EURO AREA													
M3 excluding currency in circulation	10528	10559	10589	10643	10662	10679	10749	10750	10761	10755	10812	10868	10943
M3	11619	11658	11694	11746	11766	11786	11856	11873	11869	11863	11929	11990	12069
of which: by MFI⁽²⁾ in BELGIUM													
Deposits													
overnight	197.2	197.3	194.8	193.2	196.4	202	204	200.5	201.5	201.3	204.9	206.5	221.2
with agreed maturity up to 2 years	11.4	10.8	11.7	12.2	11.8	12.6	12.1	12.2	12.5	13	14.6	13.8	12.9
redeemable at notice up to 3 months	300.9	301.1	301.7	301.8	301.9	301.5	301.6	301.6	303.1	304.3	305.4	305.3	307
Others M3 ⁽³⁾ components	27.3	27.3	25.3	28.4	28.3	28.2	28	29	21.9	23.2	23.7	22.7	19.1
M3 ⁽³⁾	536.7	536.4	533.6	535.7	538.5	544.3	545.7	543.3	539.1	541.8	548.7	548.4	550.2

Sources: NBB, ECB.

(1) M3 comprises currency in circulation, deposits with agreed maturity up to 2 years, repurchase agreements (exclude the Repurchase agreements with Central counterparties - CCPs), money market fund shares/units, money market paper and debt securities up to 2 years.

(2) Monetary Financial Institutions.

(3) Excluding currency in circulation.

	2015		2016				2017			
	III	IV	I	II	III	IV	I	II	III	IV
	<i>(end of period outstanding amounts in billions of euro)</i>									
FINANCIAL ASSETS										
Individuals	1244.6	1286.5	1302.6	1308.8	1319.5	1327.3	1334.9	1330.5	1339.0	1347.6
General government	194.3	198.5	200.6	209.4	207.0	216.2	189.6	188.9	187.3	190.0
Non-financial corporations	1349.3	1369.5	1421.6	1436.1	1427.7	1474.7	1475.3	1456.1	1463.4	1457.9
FINANCIAL LIABILITIES										
Individuals	254.8	257.0	260.2	263.3	265.7	266.4	270.0	273.7	276.2	278.6
General government	588.4	588.7	604.8	619.9	622.1	610.5	583.1	573.4	574.8	576.1
Non-financial corporations	1807.4	1845.2	1866.8	1896.9	1873.6	1936.7	1945.5	1925.1	1913.1	1909.9
NET FINANCIAL WEALTH										
Individuals	989.7	1029.5	1042.4	1045.5	1053.8	1060.9	1064.9	1056.8	1062.7	1068.9
General government	-394.1	-390.2	-404.2	-410.5	-415.1	-394.4	-393.5	-384.6	-387.6	-386.1
Non-financial corporations	-458.1	-475.7	-445.3	-460.7	-446.0	-462.0	-470.2	-469.0	-449.6	-452.0

Source: NBB.

Conventional signs

- indicates data which have been updated since the previous publication.
- 0.0 nil or less than half the smallest digit considered.
- data non-existent or meaningless.
- n. not available.
- e estimate.

Information

We suggest people wanting more information about the contents, the methodology, the methods of calculations and the sources to get in touch with the Statistical information systems of the National Bank of Belgium.

Alexander Foket tel.: +32 2 221 30 45 fax: +32 2 221 31 34
 Nino Di Zinno tel.: +32 2 221 21 36
 E-mail: datashop@nbb.be

Editor
 Rudi Acx
 Head of the General Statistics Department

National Bank of Belgium
 boulevard de Berlaimont 14 BE-1000 Brussels

Closing date 29/06/2018. Next issue: 06/07/2018.

All rights reserved.
 Reproduction for educational and non-commercial purposes is permitted provided that the source is acknowledged.